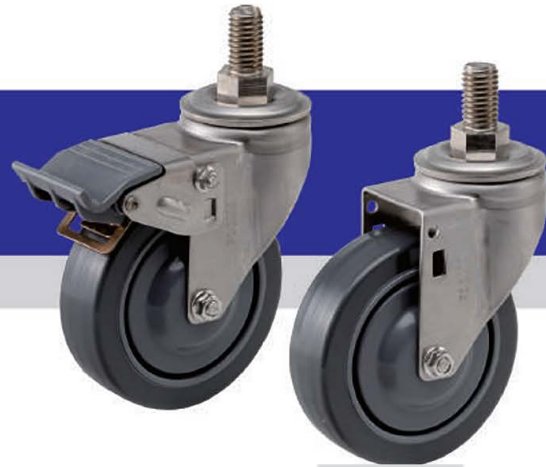


# SGL(Stainless) series

Stainless light duty casters



kg 65 ~ 100 kg

✓ RoHS

- Carts for kitchen, restaurant, hotel
- Carts for school feeding
- Medical appliances



			✓ Recommended Load = Load Cap. X 3							✓ Temp. Range : -10 ~ 90°C	
Swivel	Rigid	Swivel/Brake	WHEEL TYPES	[mm]	[mm]	[kg]	[mm]	[mm]	[mm]	[mm]	[mm]
SGL-75-ASS		SGL-75-BSS	TUN	75	25	65	105	40	5/8"-11 UNC	10+25	22
			HRN								
			TUSS								
SGL-100-ASS		SGL-100-BSS	HRSS	100	30	90	130	37	5/8"-11 UNC	10+25	22
			TUN								
			HRN								
SGL-125-ASS		SGL-125-BSS	TUSS	125	30	100	157	35	5/8"-11 UNC	10+25	22
			HRSS								
			TUD								
			HRD								



### ✓ Wheel types

TUN

- Injection PU(Shore A 92)
- PP core

HRN



- Rubber(Shore A 85)
- PP core

TUSS



- Injection PU(Shore A 92)
- PP core
- 1Stainless Ball bearing

HRSS

- Rubber(Shore A 85)
- PP core
- 1Stainless Ball bearing

TUD



- Injection PU(Shore A 92)
- PP core
- 2 Stainless Ball bearings

HRD

- Rubber(Shore A 85)
- PP core
- 2 Stainless Ball bearings

### ✓ Materials



- ① Top plate : Stainless steel
- ② Frame : Stainless steel
- ③ Wheel : Refer to wheel types

### ✓ Options