

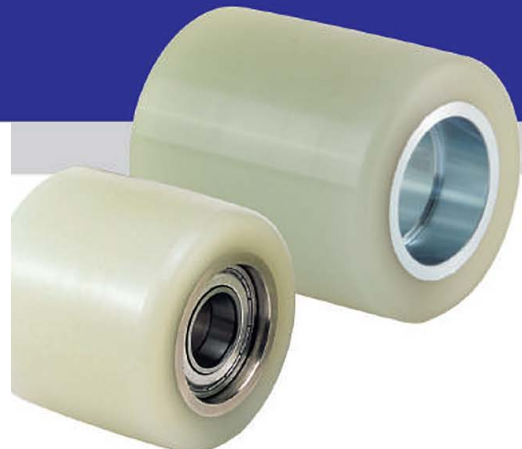
# Roller Wheel

Heavy Duty Wheels

**STEEL CORE**

**kg** 380 ~ 750 kg

✓ RoHS



## High quality Roller wheel

- ✓ Solid structure by the application of the steel core
- ✓ High quality polyurethane + Excellent adhesion
- ✓ Strong water resistance. Strong corrosion resistance
- ✓ Outstanding at mechanical property
- ✓ Temp. range : -10 ~ +90°C

Model	Wheel types	Details	Wheel dia (D)	Wheel width (W)	Hub length (L)	Shaft dia. (A)	Load capacity (kg)	Bearing
HURD	HURD-80-06017	✓ Cast PU(Shore A95) ✓ Steel core ✓ 2 Ball bearings	80	55	60	17	380	6005 ZZ
	HURD-80-07017		80	65	70	17	450	6005 ZZ
	HURD-80-10017		80	95	100	17	650	6005 ZZ
	HURD-80-06020		80	55	60	20	380	6005 ZZ
	HURD-80-07020		80	65	70	20	450	6005 ZZ
	HURD-80-10020		80	95	100	20	650	6005 ZZ
	HURD-85-06017		85	55	60	17	450	6005 ZZ
	HURD-85-07017		85	65	70	17	520	6005 ZZ
	HURD-85-08017		85	75	80	17	600	6005 ZZ
	HURD-85-09017		85	85	90	17	670	6005 ZZ
	HURD-85-10017		85	95	100	17	750	6005 ZZ
	HURD-85-06020		85	55	60	20	450	6005 ZZ
	HURD-85-07020		85	65	70	20	520	6005 ZZ
	HURD-85-08020		85	75	80	20	600	6005 ZZ
	HURD-85-09020		85	85	90	20	670	6005 ZZ
	HURD-85-10020		85	95	100	20	750	6005 ZZ

# CasterDepot®

Wheel types \*\*

