

Item Shown: 73-10302-66-1N

## FEATURES

Our popular shock absorbing casters have swivel sections that are constructed of high alloy steel and are precision machined for close tolerances and long life. These casters feature legs of thick section plate steel. Integrally forged kingpins are available from 3/4" to 1-1/4" in diameter. In normal configurations, these swivel sections will carry 3 to 4 times their listed capacity.

## BENEFITS

The high strength chrome vanadium springs provide longer life through constant flexing and compressing. The spring compression starts with as little as 25 pounds loading per caster resulting in cushioned loads and quiet empty returns. The long swivel lead reduces excessive shimmy and vibration while towing.

## APPLICATIONS

Shock absorbing casters are ideal for jet engine dollies, aircraft jacks, in-plant trailers, trash gondolas, lift truck stabilizer casters, revolving signs and parade floats.

## OPTIONS

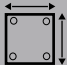
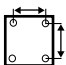

### Brakes:

- Poly Lock: ..... P
- Face Contact: ..... F

### Swivel Locks:

- Factory Installed: ..... L
- Demountable: ..... DL

Special non-catalog sizes and designs are available.

| <br>Top Plate Size | <br>Bolt Hole Spacing | <br>Bolt Diameter |
|---|--|--|
| Std. 53:<br>4.0 x 5.0   | 2.625 x 3.625<br>Slotted to 3.0 x 3.0  | 0.375  |
| Std. 63/67:<br>4.5 x 6.25   | 2.438 x 4.938<br>Slotted to 3.375 x 5.25   | 0.5  |
| Std. 73:<br>5.0 x 7.25  | 3.375 x 5.25<br>Slotted to 4.125 x 6.125   | 0.5  |
| Std. 83:<br>6.0 x 7.5   | 4.5 x 6.0  | 0.5  |
| Std. 93:<br>8.5 x 8.5   | 7.0 x 7.0  | 0.625  |



| WHEEL |       |                       | CAPACITY |         |       |             | PART NUMBER                   |                               |        |               |       |
|-------|-------|-----------------------|----------|---------|-------|-------------|-------------------------------|-------------------------------|--------|---------------|-------|
| Dia.  | Width | Material              | Roller   | Tapered | OAH   | Swivel Lead | Straight Roller               | Precision Tapered             | Series | Swivel Radius | Wt.   |
| 4     | 2.00  | Standard Polyurethane | 500      |         | 7.31  | 1.75        | <a href="#">53-04201-60-1</a> |                               | 50     | 3.88          | 13.00 |
| 4     | 2.00  | Mold On Rubber        | 400      |         | 7.31  | 1.75        | <a href="#">53-04201-71-1</a> |                               | 50     | 3.88          | 13.00 |
| 4     | 2.00  | Phenolic Resin        | 500      |         | 7.31  | 1.75        | <a href="#">53-04201-30-1</a> |                               | 50     | 3.88          | 12.00 |
| 5     | 2.00  | Standard Polyurethane | 500      |         | 7.81  | 1.75        | <a href="#">53-05201-60-1</a> |                               | 50     | 4.37          | 13.00 |
| 5     | 2.00  | Mold On Rubber        | 400      |         | 7.81  | 1.75        | <a href="#">53-05201-71-1</a> |                               | 50     | 4.37          | 13.00 |
| 5     | 2.00  | Phenolic Resin        | 500      |         | 7.81  | 1.75        | <a href="#">53-05201-30-1</a> |                               | 50     | 4.37          | 12.00 |
| 6     | 2.00  | Standard Polyurethane | 500      |         | 9.25  | 2.25        | <a href="#">53-06201-60-1</a> |                               | 50     | 5.34          | 15.00 |
| 6     | 2.00  | Mold On Rubber        | 425      |         | 9.25  | 2.25        | <a href="#">53-06201-71-1</a> |                               | 50     | 5.34          | 15.00 |
| 6     | 2.00  | Phenolic Resin        | 500      |         | 9.25  | 2.25        | <a href="#">53-06201-30-1</a> |                               | 50     | 5.34          | 13.00 |
| 8     | 2.00  | Standard Polyurethane | 500      |         | 11.63 | 3.25        | <a href="#">53-08201-60-1</a> |                               | 50     | 7.32          | 16.00 |
| 8     | 2.00  | Mold On Rubber        | 500      |         | 11.63 | 3.25        | <a href="#">53-08201-71-1</a> |                               | 50     | 7.32          | 16.00 |
| 8     | 2.00  | Phenolic Resin        | 500      |         | 11.63 | 3.25        | <a href="#">53-08201-30-1</a> |                               | 50     | 7.32          | 13.00 |
| 5     | 2.00  | Standard Polyurethane | 400      |         | 7.50  | 2.75        | <a href="#">63-05201-60-1</a> |                               | 60     | 5.34          | 13.00 |
| 5     | 2.00  | Mold On Rubber        | 400      |         | 7.50  | 2.75        | <a href="#">63-05201-71-1</a> |                               | 60     | 5.34          | 13.00 |
| 5     | 2.00  | Phenolic Resin        | 400      |         | 7.50  | 2.75        | <a href="#">63-05201-30-1</a> |                               | 60     | 5.34          | 11.00 |
| 6     | 2.00  | Standard Polyurethane | 500      |         | 8.50  | 2.38        | <a href="#">63-06201-60-1</a> |                               | 60     | 5.47          | 15.00 |
| 6     | 2.00  | Mold On Rubber        | 500      |         | 8.50  | 2.38        | <a href="#">63-06201-71-1</a> |                               | 60     | 5.47          | 15.00 |
| 6     | 2.00  | Phenolic Resin        | 500      |         | 8.50  | 2.38        | <a href="#">63-06201-30-1</a> |                               | 60     | 5.47          | 13.00 |
| 8     | 2.00  | Standard Polyurethane | 500      |         | 10.50 | 3.50        | <a href="#">63-08201-60-1</a> |                               | 60     | 7.57          | 16.00 |
| 8     | 2.00  | Mold On Rubber        | 410      |         | 10.50 | 3.50        | <a href="#">63-08201-71-1</a> |                               | 60     | 7.57          | 16.00 |
| 8     | 2.00  | Phenolic Resin        | 500      |         | 10.50 | 3.50        | <a href="#">63-08201-30-1</a> |                               | 60     | 7.57          | 13.00 |
| 6     | 2.50  | Standard Polyurethane | 800      | 800     | 9.50  | 3.63        | <a href="#">67-06255-60-1</a> | <a href="#">67-06257-60-1</a> | 65     | 6.74          | 27.00 |
| 6     | 2.50  | Mold On Rubber        | 670      | 670     | 9.50  | 3.63        | <a href="#">67-06255-70-1</a> | <a href="#">67-06257-70-1</a> | 65     | 6.74          | 26.00 |
| 6     | 2.50  | Phenolic Resin        | 800      | 800     | 9.50  | 3.63        | <a href="#">67-06255-30-1</a> | <a href="#">67-06257-30-1</a> | 65     | 6.74          | 18.00 |
| 8     | 2.50  | Standard Polyurethane | 800      | 800     | 11.50 | 4.00        | <a href="#">67-08255-60-1</a> | <a href="#">67-08257-60-1</a> | 65     | 8.10          | 25.00 |
| 8     | 2.50  | Mold On Rubber        | 670      | 670     | 11.50 | 4.00        | <a href="#">67-08255-70-1</a> | <a href="#">67-08257-70-1</a> | 65     | 8.10          | 25.00 |
| 8     | 2.50  | Phenolic Resin        | 800      | 800     | 11.50 | 4.00        | <a href="#">67-08255-30-1</a> | <a href="#">67-08257-30-1</a> | 65     | 8.10          | 20.00 |
| 10    | 2.50  | Standard Polyurethane | 800      | 800     | 14.00 | 5.50        | <a href="#">67-10255-60-1</a> | <a href="#">67-10257-60-1</a> | 65     | 10.57         | 32.00 |
| 10    | 2.50  | Mold On Rubber        | 800      | 800     | 14.00 | 5.50        | <a href="#">67-10255-70-1</a> | <a href="#">67-10257-70-1</a> | 65     | 10.57         | 27.00 |
| 10    | 2.50  | Phenolic Resin        | 800      | 800     | 14.00 | 5.50        | <a href="#">67-10255-30-1</a> | <a href="#">67-10257-30-1</a> | 65     | 10.57         | 22.00 |
| 6     | 3.00  | Standard Polyurethane | 1,100    | 1,100   | 10.00 | 4.00        | <a href="#">73-06301-60-1</a> | <a href="#">73-06309-60-1</a> | 71     | 7.16          | 35.00 |
| 6     | 3.00  | Mold On Rubber        | 700      | 700     | 10.00 | 4.00        | <a href="#">73-06301-70-1</a> | <a href="#">73-06309-70-1</a> | 71     | 7.16          | 34.00 |
| 6     | 3.00  | Phenolic Resin        | 1,100    | 1,100   | 10.00 | 4.00        | <a href="#">73-06301-30-1</a> | <a href="#">73-06309-30-1</a> | 71     | 7.16          | 28.00 |
| 8     | 3.00  | Standard Polyurethane | 1,100    | 1,100   | 12.00 | 4.00        | <a href="#">73-08301-60-1</a> | <a href="#">73-08309-60-1</a> | 71     | 8.14          | 38.00 |
| 8     | 3.00  | Mold On Rubber        | 850      | 850     | 12.00 | 4.00        | <a href="#">73-08301-70-1</a> | <a href="#">73-08309-70-1</a> | 71     | 8.14          | 38.00 |
| 8     | 3.00  | H.D. T/R Polyurethane | 1,100    | 1,100   | 12.00 | 4.00        | <a href="#">73-08301-66-1</a> | <a href="#">73-08309-66-1</a> | 71     | 8.14          | 32.00 |
| 10    | 3.00  | Standard Polyurethane | 1,100    | 1,100   | 13.50 | 4.50        | <a href="#">73-10301-60-1</a> | <a href="#">73-10309-60-1</a> | 71     | 9.62          | 45.00 |
| 10    | 3.00  | Mold On Rubber        | 1,100    | 1,100   | 13.50 | 4.50        | <a href="#">73-10301-70-1</a> | <a href="#">73-10309-70-1</a> | 71     | 9.62          | 42.00 |
| 10    | 3.00  | H.D. T/R Polyurethane | 1,100    | 1,100   | 13.50 | 4.50        | <a href="#">73-10301-66-1</a> | <a href="#">73-10309-66-1</a> | 71     | 9.62          | 38.00 |

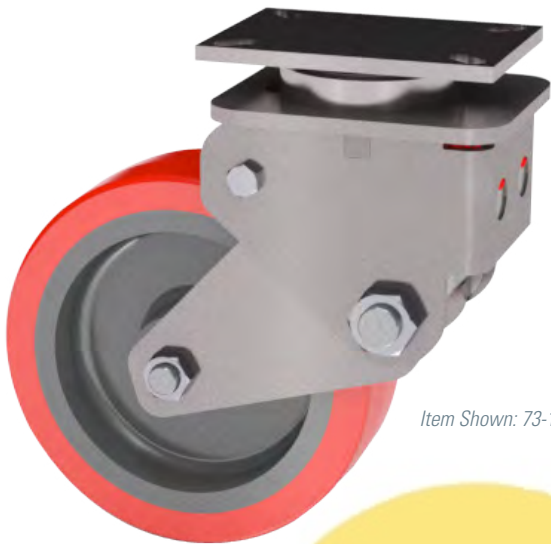


| WHEEL  |       |                            | CAPACITY |         |       |             | PART NUMBER                   |                   |        |               |        |
|--|-------|----------------------------|----------|---------|-------|-------------|-------------------------------|-------------------|--------|---------------|--------|
| Dia.   | Width | Material                   | Roller   | Tapered | OAH   | Swivel Lead | Straight Roller               | Precision Tapered | Series | Swivel Radius | Wt.    |
| 8  | 3.00  | Standard Polyurethane      | 1,700    | 1,700   | 12.00 | 4.00        | <a href="#">83-08301-60-1</a> | 83-08309-60-1     | 80     | 8.14          | 58.00  |
| 8  | 3.00  | Mold On Rubber             | 825      | 825     | 12.00 | 4.00        | <a href="#">83-08301-70-1</a> | 83-08309-70-1     | 80     | 8.14          | 58.00  |
| 8  | 3.00  | H.D. T/R Polyurethane      | 1,700    | 1,700   | 12.00 | 4.00        | <a href="#">83-08301-66-1</a> | 83-08309-66-1     | 80     | 8.14          | 48.00  |
| 10   | 3.00  | Standard Polyurethane      | 1,700    | 1,700   | 14.50 | 4.50        | <a href="#">83-10301-60-1</a> | 83-10309-60-1     | 80     | 9.62          | 65.00  |
| 10   | 3.00  | Mold On Rubber             | 1,000    | 1,000   | 14.50 | 4.50        | <a href="#">83-10301-70-1</a> | 83-10309-70-1     | 80     | 9.62          | 55.00  |
| 10   | 3.00  | H.D. T/R Polyurethane      | 1,700    | 1,700   | 14.50 | 4.50        | <a href="#">83-10301-66-1</a> | 83-10309-66-1     | 80     | 9.62          | 50.00  |
| 12   | 3.00  | Standard Polyurethane      | 1,500    | 1,500   | 17.00 | 5.50        | <a href="#">83-12301-60-1</a> | 83-12309-60-1     | 80     | 11.60         | 65.00  |
| 12   | 3.00  | Mold On Rubber             | 1,150    | 1,150   | 17.00 | 5.50        | <a href="#">83-12301-70-1</a> | 83-12309-70-1     | 80     | 11.60         | 62.00  |
| 12   | 3.00  | Phenolic Resin             | 1,500    | 1,500   | 17.00 | 5.50        | <a href="#">83-12301-30-1</a> | 83-12309-30-1     | 80     | 11.60         | 64.00  |
| 10   | 4.00  | Standard Polyurethane      | 4,000    | 4,000   | 16.25 | 3.50        |                               | 93-10409-60-1     | 91     | 8.73          | 100.00 |
| 10   | 4.00  | Forged Steel               | 4,000    | 4,000   | 16.25 | 3.50        |                               | 93-10409-20-1     | 91     | 8.73          | 110.00 |
| 10   | 5.00  | H.D. Standard Polyurethane | 4,000    | 4,000   | 16.25 | 3.50        |                               | 93-10509-65-1     | 91     | 8.86          | 110.00 |
| <b>Super Duty Shock Absorbing Dual Wheel Casters</b> |       |                            |          |         |       |             |                               |                   |        |               |        |
| 10   | 5.00  | H.D. Standard Polyurethane |          | 8,000   | 16.25 | 3.50        |                               | 2-93-10509-65-1   | 91     |               | 250.00 |
| 18   | 5.00  | H.D. Standard Polyurethane |          | 20,000  | 25.50 | 4.50        |                               | 103-18509-65-1    | 91     |               | 400.00 |

Capacity listed is for manual operation. For powered operations, consult factory.  
 Part Numbers listed are for the swivel casters. For rigid casters, change the last digit from 1 to 2 (i.e. 83-12309-30-2)  
 Estimated weight is for swivel caster. Deduct 20 percent for rigid casters.  
 All dimensions are in inches. All weights are in pounds.  
 # Swivel radius for unloaded casters.

CasterDepot





Item Shown: 73-10302-66-1N

## FEATURES

Our popular shock absorbing casters have swivel sections that are constructed of high alloy steel and are precision machined for close tolerances and long life. These casters feature legs of thick section plate steel. Integrally forged kingpins are available from 3/4" to 1-1/4" in diameter. In normal configurations, these swivel sections will carry 3 to 4 times their listed capacity.

## BENEFITS

The high strength chrome vanadium springs provide longer life through constant flexing and compressing. The spring compression starts with as little as 25 pounds loading per caster resulting in cushioned loads and quiet empty returns. The long swivel lead reduces excessive shimmy and vibration while towing.

## APPLICATIONS

Shock absorbing casters are ideal for jet engine dollies, aircraft jacks, in-plant trailers, trash gondolas, lift truck stabilizer casters, revolving signs and parade floats.

## OPTIONS

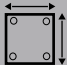
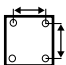

### Brakes:

- Poly Lock: ..... P
- Face Contact: ..... F

### Swivel Locks:

- Factory Installed: ..... L
- Demountable: ..... DL

Special non-catalog sizes and designs are available.

|  |  |  |
|---|---|---|
| Top Plate Size  | Bolt Hole Spacing   | Bolt Diameter   |
| Std. 53:<br>4.0 x 5.0   | 2.625 x 3.625<br>Slotted to 3.0 x 3.0   | 0.375   |
| Std. 63/67:<br>4.5 x 6.25   | 2.438 x 4.938<br>Slotted to 3.375 x 5.25  | 0.5   |
| Std. 73:<br>5.0 x 7.25  | 3.375 x 5.25<br>Slotted to 4.125 x 6.125  | 0.5   |
| Std. 83:<br>6.0 x 7.5   | 4.5 x 6.0   | 0.5   |
| Std. 93:<br>8.5 x 8.5   | 7.0 x 7.0   | 0.625   |



| WHEEL |       |                       | CAPACITY |         |       |             | PART NUMBER                   |                               |        |               |       |
|-------|-------|-----------------------|----------|---------|-------|-------------|-------------------------------|-------------------------------|--------|---------------|-------|
| Dia.  | Width | Material              | Roller   | Tapered | OAH   | Swivel Lead | Straight Roller               | Precision Tapered             | Series | Swivel Radius | Wt.   |
| 4     | 2.00  | Standard Polyurethane | 500      |         | 7.31  | 1.75        | <a href="#">53-04201-60-1</a> |                               | 50     | 3.88          | 13.00 |
| 4     | 2.00  | Mold On Rubber        | 400      |         | 7.31  | 1.75        | <a href="#">53-04201-71-1</a> |                               | 50     | 3.88          | 13.00 |
| 4     | 2.00  | Phenolic Resin        | 500      |         | 7.31  | 1.75        | <a href="#">53-04201-30-1</a> |                               | 50     | 3.88          | 12.00 |
| 5     | 2.00  | Standard Polyurethane | 500      |         | 7.81  | 1.75        | <a href="#">53-05201-60-1</a> |                               | 50     | 4.37          | 13.00 |
| 5     | 2.00  | Mold On Rubber        | 400      |         | 7.81  | 1.75        | <a href="#">53-05201-71-1</a> |                               | 50     | 4.37          | 13.00 |
| 5     | 2.00  | Phenolic Resin        | 500      |         | 7.81  | 1.75        | <a href="#">53-05201-30-1</a> |                               | 50     | 4.37          | 12.00 |
| 6     | 2.00  | Standard Polyurethane | 500      |         | 9.25  | 2.25        | <a href="#">53-06201-60-1</a> |                               | 50     | 5.34          | 15.00 |
| 6     | 2.00  | Mold On Rubber        | 425      |         | 9.25  | 2.25        | <a href="#">53-06201-71-1</a> |                               | 50     | 5.34          | 15.00 |
| 6     | 2.00  | Phenolic Resin        | 500      |         | 9.25  | 2.25        | <a href="#">53-06201-30-1</a> |                               | 50     | 5.34          | 13.00 |
| 8     | 2.00  | Standard Polyurethane | 500      |         | 11.63 | 3.25        | <a href="#">53-08201-60-1</a> |                               | 50     | 7.32          | 16.00 |
| 8     | 2.00  | Mold On Rubber        | 500      |         | 11.63 | 3.25        | <a href="#">53-08201-71-1</a> |                               | 50     | 7.32          | 16.00 |
| 8     | 2.00  | Phenolic Resin        | 500      |         | 11.63 | 3.25        | <a href="#">53-08201-30-1</a> |                               | 50     | 7.32          | 13.00 |
| 5     | 2.00  | Standard Polyurethane | 400      |         | 7.50  | 2.75        | <a href="#">63-05201-60-1</a> |                               | 60     | 5.34          | 13.00 |
| 5     | 2.00  | Mold On Rubber        | 400      |         | 7.50  | 2.75        | <a href="#">63-05201-71-1</a> |                               | 60     | 5.34          | 13.00 |
| 5     | 2.00  | Phenolic Resin        | 400      |         | 7.50  | 2.75        | <a href="#">63-05201-30-1</a> |                               | 60     | 5.34          | 11.00 |
| 6     | 2.00  | Standard Polyurethane | 500      |         | 8.50  | 2.38        | <a href="#">63-06201-60-1</a> |                               | 60     | 5.47          | 15.00 |
| 6     | 2.00  | Mold On Rubber        | 500      |         | 8.50  | 2.38        | <a href="#">63-06201-71-1</a> |                               | 60     | 5.47          | 15.00 |
| 6     | 2.00  | Phenolic Resin        | 500      |         | 8.50  | 2.38        | <a href="#">63-06201-30-1</a> |                               | 60     | 5.47          | 13.00 |
| 8     | 2.00  | Standard Polyurethane | 500      |         | 10.50 | 3.50        | <a href="#">63-08201-60-1</a> |                               | 60     | 7.57          | 16.00 |
| 8     | 2.00  | Mold On Rubber        | 410      |         | 10.50 | 3.50        | <a href="#">63-08201-71-1</a> |                               | 60     | 7.57          | 16.00 |
| 8     | 2.00  | Phenolic Resin        | 500      |         | 10.50 | 3.50        | <a href="#">63-08201-30-1</a> |                               | 60     | 7.57          | 13.00 |
| 6     | 2.50  | Standard Polyurethane | 800      | 800     | 9.50  | 3.63        | <a href="#">67-06255-60-1</a> | <a href="#">67-06257-60-1</a> | 65     | 6.74          | 27.00 |
| 6     | 2.50  | Mold On Rubber        | 670      | 670     | 9.50  | 3.63        | <a href="#">67-06255-70-1</a> | <a href="#">67-06257-70-1</a> | 65     | 6.74          | 26.00 |
| 6     | 2.50  | Phenolic Resin        | 800      | 800     | 9.50  | 3.63        | <a href="#">67-06255-30-1</a> | <a href="#">67-06257-30-1</a> | 65     | 6.74          | 18.00 |
| 8     | 2.50  | Standard Polyurethane | 800      | 800     | 11.50 | 4.00        | <a href="#">67-08255-60-1</a> | <a href="#">67-08257-60-1</a> | 65     | 8.10          | 25.00 |
| 8     | 2.50  | Mold On Rubber        | 670      | 670     | 11.50 | 4.00        | <a href="#">67-08255-70-1</a> | <a href="#">67-08257-70-1</a> | 65     | 8.10          | 25.00 |
| 8     | 2.50  | Phenolic Resin        | 800      | 800     | 11.50 | 4.00        | <a href="#">67-08255-30-1</a> | <a href="#">67-08257-30-1</a> | 65     | 8.10          | 20.00 |
| 10    | 2.50  | Standard Polyurethane | 800      | 800     | 14.00 | 5.50        | <a href="#">67-10255-60-1</a> | <a href="#">67-10257-60-1</a> | 65     | 10.57         | 32.00 |
| 10    | 2.50  | Mold On Rubber        | 800      | 800     | 14.00 | 5.50        | <a href="#">67-10255-70-1</a> | <a href="#">67-10257-70-1</a> | 65     | 10.57         | 27.00 |
| 10    | 2.50  | Phenolic Resin        | 800      | 800     | 14.00 | 5.50        | <a href="#">67-10255-30-1</a> | <a href="#">67-10257-30-1</a> | 65     | 10.57         | 22.00 |
| 6     | 3.00  | Standard Polyurethane | 1,100    | 1,100   | 10.00 | 4.00        | <a href="#">73-06301-60-1</a> | <a href="#">73-06309-60-1</a> | 71     | 7.16          | 35.00 |
| 6     | 3.00  | Mold On Rubber        | 700      | 700     | 10.00 | 4.00        | <a href="#">73-06301-70-1</a> | <a href="#">73-06309-70-1</a> | 71     | 7.16          | 34.00 |
| 6     | 3.00  | Phenolic Resin        | 1,100    | 1,100   | 10.00 | 4.00        | <a href="#">73-06301-30-1</a> | <a href="#">73-06309-30-1</a> | 71     | 7.16          | 28.00 |
| 8     | 3.00  | Standard Polyurethane | 1,100    | 1,100   | 12.00 | 4.00        | <a href="#">73-08301-60-1</a> | <a href="#">73-08309-60-1</a> | 71     | 8.14          | 38.00 |
| 8     | 3.00  | Mold On Rubber        | 850      | 850     | 12.00 | 4.00        | <a href="#">73-08301-70-1</a> | <a href="#">73-08309-70-1</a> | 71     | 8.14          | 38.00 |
| 8     | 3.00  | H.D. T/R Polyurethane | 1,100    | 1,100   | 12.00 | 4.00        | <a href="#">73-08301-66-1</a> | <a href="#">73-08309-66-1</a> | 71     | 8.14          | 32.00 |
| 10    | 3.00  | Standard Polyurethane | 1,100    | 1,100   | 13.50 | 4.50        | <a href="#">73-10301-60-1</a> | <a href="#">73-10309-60-1</a> | 71     | 9.62          | 45.00 |
| 10    | 3.00  | Mold On Rubber        | 1,100    | 1,100   | 13.50 | 4.50        | <a href="#">73-10301-70-1</a> | <a href="#">73-10309-70-1</a> | 71     | 9.62          | 42.00 |
| 10    | 3.00  | H.D. T/R Polyurethane | 1,100    | 1,100   | 13.50 | 4.50        | <a href="#">73-10301-66-1</a> | <a href="#">73-10309-66-1</a> | 71     | 9.62          | 38.00 |



| WHEEL  |       |                            | CAPACITY |         |       |             | PART NUMBER                   |                   |        |               |        |
|--|-------|----------------------------|----------|---------|-------|-------------|-------------------------------|-------------------|--------|---------------|--------|
| Dia.   | Width | Material                   | Roller   | Tapered | OAH   | Swivel Lead | Straight Roller               | Precision Tapered | Series | Swivel Radius | Wt.    |
| 8  | 3.00  | Standard Polyurethane      | 1,700    | 1,700   | 12.00 | 4.00        | <a href="#">83-08301-60-1</a> | 83-08309-60-1     | 80     | 8.14          | 58.00  |
| 8  | 3.00  | Mold On Rubber             | 825      | 825     | 12.00 | 4.00        | <a href="#">83-08301-70-1</a> | 83-08309-70-1     | 80     | 8.14          | 58.00  |
| 8  | 3.00  | H.D. T/R Polyurethane      | 1,700    | 1,700   | 12.00 | 4.00        | <a href="#">83-08301-66-1</a> | 83-08309-66-1     | 80     | 8.14          | 48.00  |
| 10   | 3.00  | Standard Polyurethane      | 1,700    | 1,700   | 14.50 | 4.50        | <a href="#">83-10301-60-1</a> | 83-10309-60-1     | 80     | 9.62          | 65.00  |
| 10   | 3.00  | Mold On Rubber             | 1,000    | 1,000   | 14.50 | 4.50        | <a href="#">83-10301-70-1</a> | 83-10309-70-1     | 80     | 9.62          | 55.00  |
| 10   | 3.00  | H.D. T/R Polyurethane      | 1,700    | 1,700   | 14.50 | 4.50        | <a href="#">83-10301-66-1</a> | 83-10309-66-1     | 80     | 9.62          | 50.00  |
| 12   | 3.00  | Standard Polyurethane      | 1,500    | 1,500   | 17.00 | 5.50        | <a href="#">83-12301-60-1</a> | 83-12309-60-1     | 80     | 11.60         | 65.00  |
| 12   | 3.00  | Mold On Rubber             | 1,150    | 1,150   | 17.00 | 5.50        | <a href="#">83-12301-70-1</a> | 83-12309-70-1     | 80     | 11.60         | 62.00  |
| 12   | 3.00  | Phenolic Resin             | 1,500    | 1,500   | 17.00 | 5.50        | <a href="#">83-12301-30-1</a> | 83-12309-30-1     | 80     | 11.60         | 64.00  |
| 10   | 4.00  | Standard Polyurethane      | 4,000    | 4,000   | 16.25 | 3.50        |                               | 93-10409-60-1     | 91     | 8.73          | 100.00 |
| 10   | 4.00  | Forged Steel               | 4,000    | 4,000   | 16.25 | 3.50        |                               | 93-10409-20-1     | 91     | 8.73          | 110.00 |
| 10   | 5.00  | H.D. Standard Polyurethane | 4,000    | 4,000   | 16.25 | 3.50        |                               | 93-10509-65-1     | 91     | 8.86          | 110.00 |
| <b>Super Duty Shock Absorbing Dual Wheel Casters</b> |       |                            |          |         |       |             |                               |                   |        |               |        |
| 10   | 5.00  | H.D. Standard Polyurethane |          | 8,000   | 16.25 | 3.50        |                               | 2-93-10509-65-1   | 91     |               | 250.00 |
| 18   | 5.00  | H.D. Standard Polyurethane |          | 20,000  | 25.50 | 4.50        |                               | 103-18509-65-1    | 91     |               | 400.00 |

Capacity listed is for manual operation. For powered operations, consult factory.  
 Part Numbers listed are for the swivel casters. For rigid casters, change the last digit from 1 to 2 (i.e. 83-12309-30-2)  
 Estimated weight is for swivel caster. Deduct 20 percent for rigid casters.  
 All dimensions are in inches. All weights are in pounds.  
 # Swivel radius for unloaded casters.

CasterDepot

