

27

SERIES **LIGHT DUTY**
350 LBS maximum capacity

casterdepot.com



Item Shown: 27-06202-61-1

FEATURES

Swivel Section: Sealed precision ball bearing with hardened raceways and neoprene seals.

Legs: 1/4" x 1-1/2" steel, formed and continuously welded on the inside and outside to the yoke base

Kingpin: Kingpinless style design.

Axle: 1/2" diameter.

Lubrication: Sealed ball bearing is lubricated and requires zero maintenance.

Wheels: 4" to 8" diameter wheels are available with sealed precision ball bearings.

Finish: Zinc plated for corrosion resistance.

BENEFITS

The 27 Series is maintenance free with its sealed precision ball bearings in the swivel section and in the wheels. The smooth rotation and extended lead lowers ergonomic forces.

APPLICATIONS

Excellent for daughter carts in mother/daughter type production cart systems, production racks and fixtures, parts bins, conveyor systems, and other applications where maintenance free casters and ergonomics are concerns.

Top Plate Size	Bolt Hole Spacing	Bolt Diameter
Std: 4.0 x 4.50	2.625 x 3.625 Slotted to 3.0 x 3.0	0.375

OPTIONS

Brakes:

Poly Lock: P*
Face Contact: F

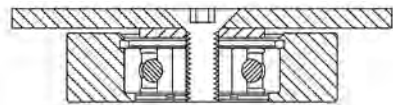
Swivel Locks:

Factory Installed: L
Demountable: DL

Toe Guard: TG

Caster Depot

27 Series Cross Sectional View



*For wheels with diameter ≥6

WHEEL			CAPACITY			PART NUMBER		
Dia.	Width	Material	Precision Ball	OAH	Swivel Lead	Precision Ball	Swivel Radius	Wt.
4	2.00	Phenolic	350	5.63	2.25	<u>27-04204-30-1*</u>	4.37	5.41
4	2.00	T/R Polyurethane	350	5.63	2.25	<u>27-04204-61-1*</u>	4.37	7.35
4	2.00	T/R-95 Polyurethane	350	5.63	2.25	<u>27-04204-91-1*</u>	4.37	7.35
4	2.00	HPPT Polyurethane	350	5.63	2.25	<u>27-04204-90-1*</u>	4.37	7.35
5	2.00	Phenolic	350	6.5	2.25	<u>27-05204-30-1*</u>	4.85	6.37
5	2.00	T/R Polyurethane	350	6.5	2.25	<u>27-05202-61-1</u>	4.85	9.83
5	2.00	T/R-95 Polyurethane	350	6.5	2.25	<u>27-05202-91-1</u>	4.85	9.83
5	2.00	HPPT Polyurethane	350	6.5	2.25	<u>27-05202-90-1</u>	4.85	9.83
6	2.00	Phenolic	350	7.5	2.25	<u>27-06204-30-1*</u>	5.34	7.19
6	2.00	T/R Polyurethane	350	7.5	2.25	<u>27-06202-61-1</u>	5.34	10.44
6	2.00	T/R-95 Polyurethane	350	7.5	2.25	<u>27-06202-91-1</u>	5.34	10.44
6	2.00	HPPT Polyurethane	350	7.5	2.25	<u>27-06202-90-1</u>	5.34	10.44
8	2.00	Phenolic	350	10.12	2.25	<u>27-08204-30-1*</u>	6.33	8.83
8	2.00	T/R Polyurethane	350	10.12	2.25	<u>27-08202-61-1</u>	6.33	13.46
8	2.00	T/R-95 Polyurethane	350	10.12	2.25	<u>27-08202-91-1</u>	6.33	13.46
8	2.00	HPPT Polyurethane	350	10.12	2.25	<u>27-08202-90-1</u>	6.33	13.46

Capacity listed is for manual operation. For powered operations, consult factory.
 Part numbers listed are for the swivel caster. For rigid casters, change the last digit from 1 to 2 (i.e. 27-04204-30-2)
 Estimated weight is for the swivel caster. Deduct 20% of swivel caster weight for rigid caster.
 * These casters have annular ball bearings.
 All dimensions are in inches. All weights are in pounds.

