
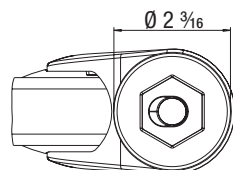
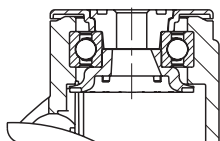


WAVE Series for 1/2" Mounting Bolt

Design Bolt Hole Synthetic Swivel Casters

 220 - 240 lbs

 RoHS


The LWG and LWGX rig series with bolt hole fitting in silver gray (RAL 7001) are available with the following wheels:

TPA



Tread: High-quality thermoplastic rubber-elastomer (TPE), containing traces of oil, 85° shore A, gray, non-marking, chemically bonded.
Wheel center: Impact-resistant polypropylene, silver gray.
Bearing type: **Plain bore**.
For more information refer to page 64

TPA



Tread: High-quality thermoplastic rubber-elastomer (TPE), containing traces of oil, 85° shore A, gray, non-marking, chemically bonded.
Wheel center: Impact-resistant polypropylene, silver gray.
Bearing type: **Ball bearing (C)** with synthetic thread guard.
For more information refer to page 64

 **BLICKLE**
DESIGN LINE

Swivel casters	Swivel casters with 'stop-fix' brake	Wheel Ø [inch] [mm]	Wheel width [inch] [mm]	Load capacity [lbs] [kg]	Bearing type	Total height [inch] [mm]	Plate Ø [inch]	For mounting bolt [inch]	Offset [inch]	G15 page
LWG-TPA series (plain bore)										
LWG-TPA 101G	LWG-TPA 101G-FI	4 [100]	1 1/4 [32]	220 [100]	Plain bore	5 5/16 [135]	2 3/16	1/2	1 1/2	120
LWG-TPA 126G	LWG-TPA 126G-FI	5 [125]	1 1/4 [32]	240 [110]	Plain bore	6 5/16 [160]	2 3/16	1/2	1 5/16	120
LWG-TPA series (ball bearing)										
LWG-TPA 101K-FK	LWG-TPA 101K-FI-FK	4 [100]	1 1/4 [32]	220 [100]	Ball bearing (C)	5 5/16 [135]	2 3/16	1/2	1 1/2	120
LWG-TPA 126K-FK	LWG-TPA 126K-FI-FK	5 [125]	1 1/4 [32]	240 [110]	Ball bearing (C)	6 5/16 [160]	2 3/16	1/2	1 5/16	120
LWX-TPA series (plain bore) - corrosion-resistant										
LWX-TPA 101G	LWX-TPA 101G-FI	4 [100]	1 1/4 [32]	220 [100]	Plain bore	5 5/16 [135]	2 3/16	1/2	1 1/2	123
LWX-TPA 126G	LWX-TPA 126G-FI	5 [125]	1 1/4 [32]	240 [110]	Plain bore	6 5/16 [160]	2 3/16	1/2	1 5/16	123
LWX-TPA series (ball bearing) - corrosion-resistant										
LWX-TPA 101XK-FK	LWX-TPA 101XK-FI-FK	4 [100]	1 1/4 [32]	220 [100]	Ball bearing (C)	5 5/16 [135]	2 3/16	1/2	1 1/2	123
LWX-TPA 126XK-FK	LWX-TPA 126XK-FI-FK	5 [125]	1 1/4 [32]	240 [110]	Ball bearing (C)	6 5/16 [160]	2 3/16	1/2	1 5/16	123



More options in the Blickle general catalog G15!

Options




	Electrically conductive version, non-marking gray *	With top plate fitting **	With top plate fitting and swivel lock, combined with tread lock	With stem fitting	With central braking system 'central-stop' ***	With threaded bolt Ø 3/8" or 1/2"	In special color
Product code suffix	LWG(X)E-...ELS	-P / -PX	-RIFI	-ZA / -ZAX	-CS11		
Available for	ball bearing versions upon request	upon request	wheel Ø 5" upon request	upon request	upon request	upon request	upon request

* Load capacity is reduced by 35 % ** Total height + 1/8"

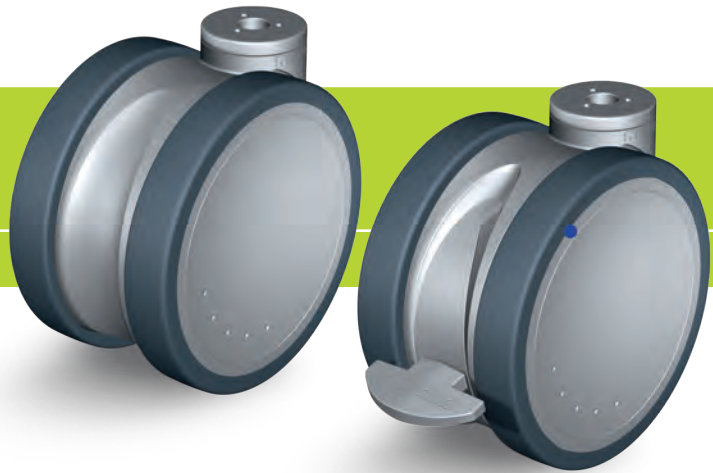
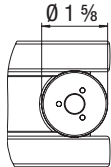
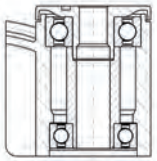
*** Please pay attention to the metric measurement of the 11 mm switch cam

MOVE Series for 1/2" Mounting Bolt

Design Bolt Hole Synthetic Double Swivel Casters

 275 - 330 lbs

 RoHS



1

The LKDG and LKDGX rig series with bolt hole fitting in silver gray (RAL 7001) are available with the following wheel:

PATH



Tread: High-quality thermoplastic polyurethane (TPU), 94° shore A, dark gray, non-marking, non-staining, chemically bonded.
Wheel center: Impact-resistant nylon, silver gray.
Bearing type: Ball bearing.
For more information refer to page 65

 **BLICKLE**
DESIGN LINE



reddot award 2014
winner



Focus Open 2014
Special Mention

Swivel casters	Swivel casters with 'stop-fix' brake	Wheel Ø		Caster width		Load capacity		Bearing type	Total height		Plate Ø	For mounting bolt	Offset
		[inch]	[mm]	[inch]	[mm]	[lbs]	[kg]		[inch]	[mm]	[inch]	[inch]	[inch]
LKDG-PATH series													
LKDG-PATH 125K	LKDG-PATH 125K-FI	5	[125]	3 1/8	[80]	275	[125]	Ball bearing	5 1/8	[130]	1 1/8	1/2	1 9/16
LKDG-PATH 150K	LKDG-PATH 150K-FI	6	[150]	3 1/8	[80]	330	[150]	Ball bearing	6 1/8	[155]	1 1/8	1/2	2 1/16



LKDGX-PATH series - corrosion-resistant

LKDGX-PATH 125XK	LKDGX-PATH 125XK-FI	5	[125]	3 1/8	[80]	275	[125]	Ball bearing	5 1/8	[130]	1 1/8	1/2	1 9/16
LKDGX-PATH 150XK	LKDGX-PATH 150XK-FI	6	[150]	3 1/8	[80]	330	[150]	Ball bearing	6 1/8	[155]	1 1/8	1/2	2 1/16

CasterDepot

Options



	Electrically conductive version, R < 10 ⁴ Ω	With threaded bolt Ø 3/8" * or 1/2"	With stem fitting	With top plate fitting **	With central braking system 'central-stop' ***	In special color	In black color
Product code suffix	-ELS		-ZA / -ZAX	-P / -PX	-CS11		LKDB-PUA series
Available for	upon request	upon request	upon request	upon request	LKDG series upon request	upon request	Ø 2", 3", 4" upon request

* Reduced load capacity to 275 lbs for wheel-Ø 6" ** Total height +5/16"

*** Please pay attention to the metric measurement of the 11 mm switch cam