

RTH, RB, REV Series

Drive and Running Wheels for Stackers and Forklift Trucks



RTH-wheel series:

Tread: Made of high-quality, reaction-cast polyurethane-elastomer Bicklex Extrathane®, 92° shore A hardness, low-noise operation, good floor preservation, high abrasion resistance, high cut and tear propagation resistance, color light brown, non-marking, non-staining, very good chemical connection with the wheel center.

Wheel center: Made of rugged gray cast iron or ductile cast iron.

RB-wheel series:

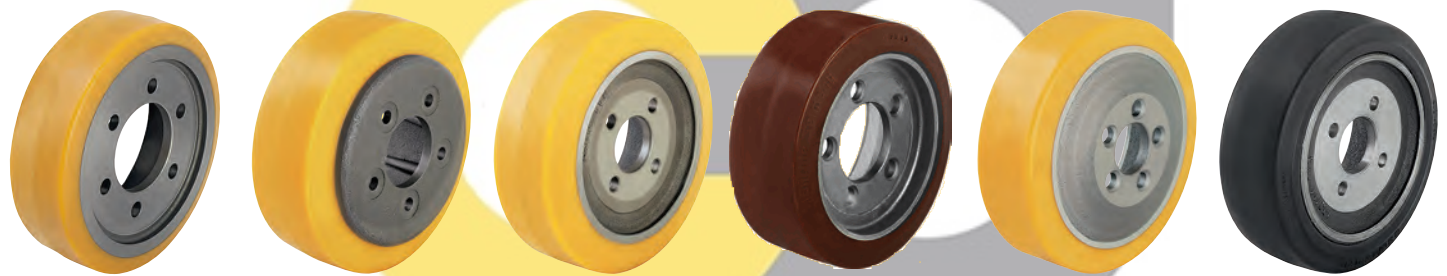
Tread: Made of high-quality, reaction-cast polyurethane-elastomer Bicklex Bestthane®, 92° shore A hardness, low-noise operation, low rolling resistance, **high dynamic load capacity**, good floor preservation, high abrasion resistance, high cut and tear propagation resistance, color brown, non-marking, non-staining, very good chemical connection with the wheel center.

Wheel center: Made of rugged gray cast iron.

REV-wheel series:

Tires: Made of superior drive-quality, elastic solid rubber, 70° shore A hardness, very high operational comfort, low-noise operation, very good floor preservation, abrasion resistance, color black.

Wheel center: Made of rugged ductile cast iron.



Product code

RTH 230x75/80-6

refer to G15 page 449

Product code

RTH 215x82/60-5

refer to G15 page 448

Product code

RTH 230x85/50-4

refer to G15 page 456

Product code

RB 250x100/80-5

refer to G15 page 456

Product code

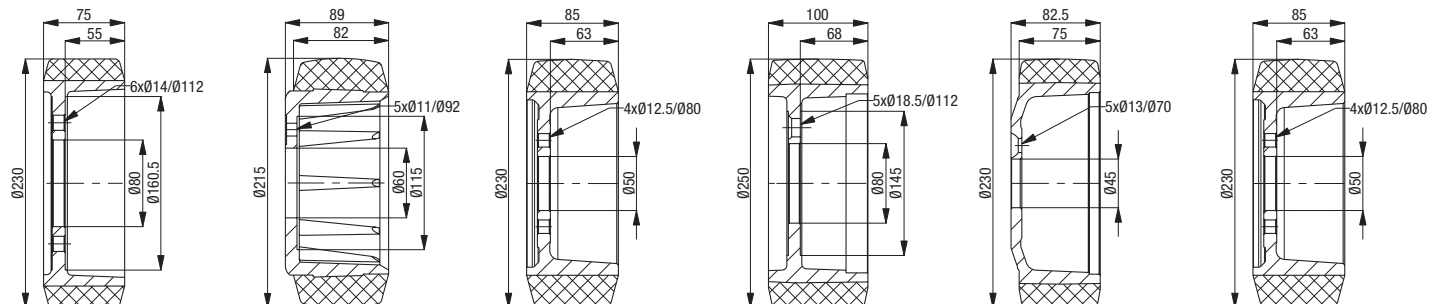
RTH 230x75/45-5

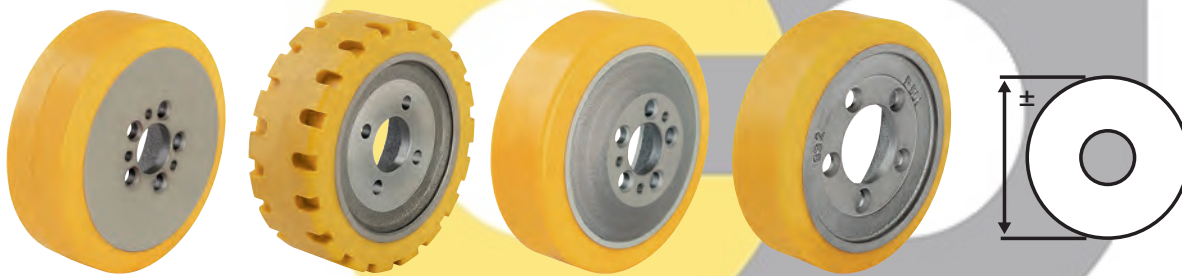
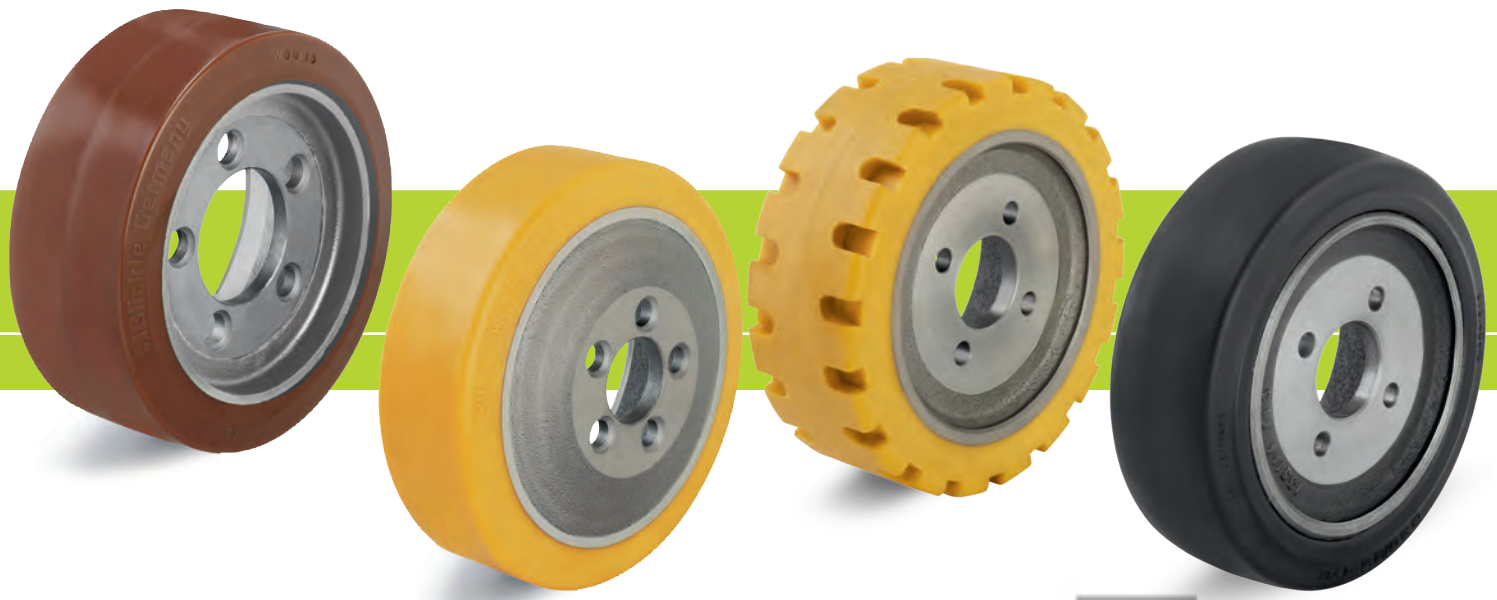
refer to G15 page 456

Product code

REV 230x85/50-4

refer to G15 page 452





10

Product code	Product code	Product code	Product code	Further dimensions
RTH 230x82/45-5+3	RTH 230x85/50-4-GL	RTH 230x70/45-5+3	RTH 255x83/80-5	upon request
refer to G15 page 453	refer to G15 page 452	refer to G15 page 449	refer to G15 page 457	refer to G15 page 448-457

