

## POSI Series

Heat-Resistant Bickie TempLine® Comfort Wheels with Silicone Rubber Tread, with Nylon Wheel Center

175 - 265 lbs

-15° F - +480° F

✓RoHS



Tread & tire hardness	75° shore A
Temperature resistance	-15° F - +480° F
Rolling resistance	good
Operating noise	very good
Floor surface preservation	very good

Bickie  
TempLine® Comfort

### POSI-wheel series:

**Tread:** Made of highly heat-resistant silicone rubber, 75° shore A hardness, very high operational comfort, low-noise operation, highly elastic, very good floor preservation, abrasion resistance, characteristics that do not degrade over time, color black, **non-marking**, vulcanized onto the wheel center.

**Wheel center:** Made of high-quality, impact and heat-resistant nylon, color gray.

### Bearing type:

- Plain bore, corrosion-resistant

### Other features:

Very high chemical resistance to many aggressive substances, **suitable for autoclaves**.

### Operating temperature: -15° F to +480° F.

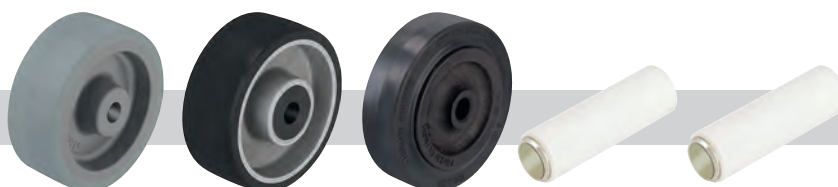
Furnace temperatures above +570° F can be tolerated temporarily, but the temperature at the tread must not exceed +480° F.

# CasterDepot

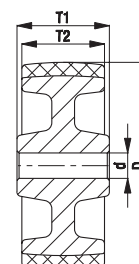
Wheels	Wheel Ø (D) [inch]	Wheel width (T2) [mm]	Load capacity [lbs]	Bearing type	Axle bore Ø (d) [mm]	Hub length (T1) [inch]	G15 page
POSI 101/12G	4	1 3/8	175	Plain bore	12	1 1/2	381
POSI 100/12G	4	1 1/8	220	Plain bore	12	1 3/4	381
POSI 125/12G	5	1 1/8	265	Plain bore	12	1 3/4	381

More  
options in the  
Bickie general  
catalog  
G15!

### Options



	With non-marking gray rubber tire *	With aluminum wheel center	Heat-resistant solid rubber wheel up to +500° F	Teflon-coated stainless steel bushing Ø 12/8x40 mm	Teflon-coated stainless steel bushing Ø 12/8x47 mm
Product code	-SG	ALSI series	VKHT series	XAT 12x40	XAT 12x47
Available for	upon request	upon request	upon request	POSI 101/12G	POSI 100/12G POSI 125/12G



\* Operating temperature up to +465° F