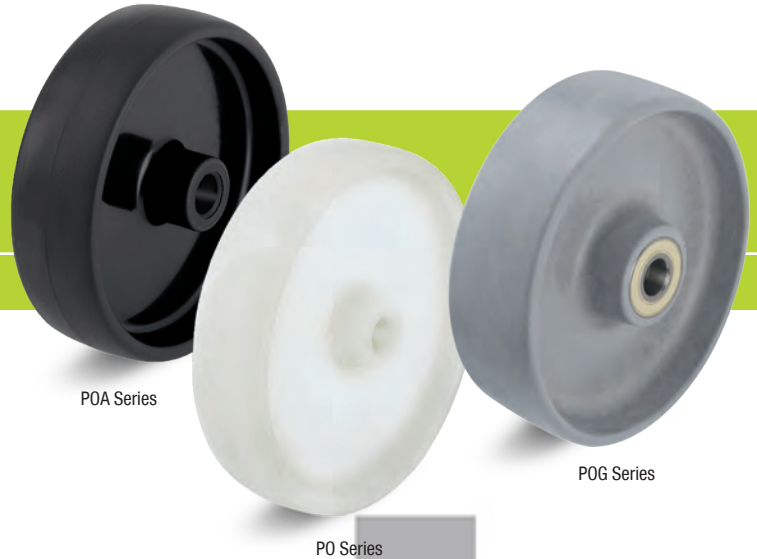


POA, PO, POG Series

Light and Medium Heavy Duty Nylon Wheels

165 - 2,200 lbs



POA Series

PO Series

POG Series

Tread & tire hardness	70° shore D
Temperature resistance	-15° F - +175° F
Rolling resistance	excellent
Operating noise	reasonable
Floor surface preservation	reasonable

POA / PO / POG-wheel series:

Made of high-quality, impact-resistant nylon, medium heavy wheel design, 70° shore D hardness, very low rolling and swivel resistance, smooth running performance on even floors, high abrasion resistance. POA series: color black, PO series: color natural white, POG series: color gray.

Bearing types:

- Plain bore, corrosion-resistant
- Ball bearing: Two pressed-in ball bearings, lubricated with long-life grease.
- Ball bearing (C): A centrally encapsulated sealed ball bearing within the injected nylon, lubricated with long-life grease.

Other features:

High chemical resistance to many aggressive substances (for more information please refer to page 36-37 of the Blickle general catalog G15). Operating temperature: -15° F to +175° F. At ambient temperatures above +95° F the load capacity is reduced. Maintenance-free under standard conditions.

Wheels	Wheel Ø (D)	Wheel width (T2)	Load capacity	Bearing type	Axle bore Ø (d)	Hub length (T1)	G15 page
	[inch]	[mm]	[lbs]		[mm]	[inch]	
POA series							
POA 50/8G	2	1 1/16	165	Plain bore	8	27/32	104
POA 75/8G	3	7/8	220	Plain bore	8	1 1/32	104
POA 80/12G	3 1/8	1 1/4	485	Plain bore	12	1 3/8	104
POA 100/12G	4	1 1/4	530	Plain bore	12	1 3/8	104
POA 125/12G	5	1 1/4	570	Plain bore	12	1 3/8	104
PO series							
PO 80/12G	3 1/8	1 1/4	485	Plain bore	12	1 3/8	276
PO 101/12G	4	1 1/4	530	Plain bore	12	1 3/8	276
PO 126/12G	5	1 1/4	570	Plain bore	12	1 3/8	276
POG series							
POG 80/12G	3 1/8	1 1/4	330	Plain bore	12	1 3/8	[35]
POG 82/15K	3 1/8	1 7/16	350	Ball bearing	15	1 3/4	[45]
POG 89/15G	3 1/2	1 1/4	330	Plain bore	15	1 3/4	[45]
POG 89/10K-FK	3 1/2	1 1/4	330	Ball bearing (C)	10	1 25/32	[46]
POG 100/12G	4	1 1/4	615	Plain bore	12	1 3/8	[45]
POG 100/15G	4	1 7/16	615	Plain bore	15	1 3/4	[45]
POG 100/10K	4	1 7/16	615	Ball bearing (C)	10	1 25/32	[46]
POG 125/12G	5	1 1/4	660	Plain bore	12	1 3/8	[45]
POG 125/15G	5	1 1/4	660	Plain bore	15	1 3/4	[45]
POG 125/10K	5	1 1/4	660	Ball bearing (C)	10	1 25/32	[46]
POG 150/20G	6	2	880	Plain bore	20	2 1/32	[60]
POG 150/20K	6	2	880	Ball bearing	20	2 1/32	[60]
POG 160/20K	6 3/8	2	990	Ball bearing	20	2 1/32	[60]
POG 200/20G	8	2	1320	Plain bore	20	2 1/32	[60]
POG 200/20K	8	2	1320	Ball bearing	20	2 1/32	[60]
POG 250/25G	10	2	2200	Plain bore	25	2 1/32	[60]
POG 250/25K	10	2	2200	Ball bearing	25	2 1/32	[60]



BUSHING
REFER TO PAGE 20

More options in the Blickle general catalog G15!

Options



Stain less

	Electrically conductive version, non-marking gray	With roller bearing in white color	In white color	With stainless steel roller or ball bearing
Product code suffix	-ELS	-R	PO / PPN series	-XR / -XK
Available for	POG series upon request	PO, POG series upon request	POA, POG series upon request	POG series upon request

