

## PATH Series

Wheels with Thermoplastic Polyurethane Tread,  
with Nylon Wheel Center

165 - 1,100 lbs

✓RoHS



<b>Tread &amp; tire hardness</b>	94° shore A
<b>Temperature resistance</b>	-15° F - +160° F temporarily up to +195° F
<b>Rolling resistance</b>	very good
<b>Operating noise</b>	good
<b>Floor surface preservation</b>	good

### PATH-wheel series:

**Tread:** Made of high-quality thermoplastic polyurethane (TPU), 94° shore A hardness, low-noise operation, low rolling and swivel resistance, good floor preservation, high abrasion resistance, color dark gray, non-marking, non-staining, chemically bonded for an inseparable connection with the wheel center.

**Wheel center:** Made of high-quality, impact-resistant nylon, color silver gray.

### Bearing type:

• Ball bearing (C): A centrally encapsulated sealed ball bearing within the injected nylon, wheel Ø 2" - 5" (except PATH 80/8-46K) with integrated synthetic thread guard, lubricated with long-life grease.

### Other features:

Very high chemical resistance to many aggressive substances.

Operating temperature: -15° F to +160° F, temporarily up to +195° F.

At ambient temperatures above +95° F the load capacity is reduced.

Maintenance-free under standard conditions.

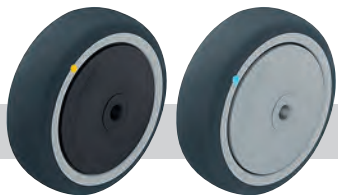
Wheels	Wheel Ø (D) [inch] [mm]	Wheel width (T2) [inch] [mm]	Load capacity [lbs] [kg]	Bearing type	Axle bore Ø (d) [mm]	Hub length (T1) [inch] [mm]	G15 page
PATH 50/6K-FK	2 [50]	¾ [19]	165 [75]	Ball bearing (C)	6	7/8 [23]	99
PATH 75/6K-FK	3 [75]	1 [25]	220 [100]	Ball bearing (C)	6	1 ½ [31]	99
PATH 80/8K-FK	3 ¼ [80]	1 ¼ [32]	330 [150]	Ball bearing (C)	8	1 13/32 [36]	99
PATH 80/8-46K	3 ¼ [80]	1 ¼ [32]	330 [150]	Ball bearing (C)	8	1 29/32 [46]	
PATH 101/8K-FK	4 [100]	1 ¼ [32]	440 [200]	Ball bearing (C)	8	1 13/32 [36]	99
PATH 100/8K-FK	4 [100]	1 ¼ [32]	440 [200]	Ball bearing (C)	8	1 29/32 [46]	208
PATH 100/10K-FK	4 [100]	1 ¼ [32]	440 [200]	Ball bearing (C)	10	1 29/32 [46]	208
PATH 126/8K-FK	5 [125]	1 ¼ [32]	550 [250]	Ball bearing (C)	8	1 13/32 [36]	99
PATH 125/8K-FK	5 [125]	1 ¼ [32]	550 [250]	Ball bearing (C)	8	1 29/32 [46]	208
PATH 125/10K-FK	5 [125]	1 ¼ [32]	550 [250]	Ball bearing (C)	10	1 29/32 [46]	208
PATH 160/12K	6 5/16 [160]	1 5/16 [40]	880 [400]	Ball bearing (C)	12	2 7/16 [62]	
PATH 200/12K	8 [200]	1 5/16 [40]	1100 [500]	Ball bearing (C)	12	2 7/16 [62]	



**BUSHING**  
REFER TO PAGE 20

More  
options in the  
Blickle general  
catalog  
G15!

### Options



Electrically conductive version, non-marking gray *	Wheel with additional ball bearing seals
<b>Product code suffix</b>	<b>-ELS</b> <b>-KD</b>
Available for	upon request upon request

\* Load capacity is reduced by 35 % to guarantee conductivity

