
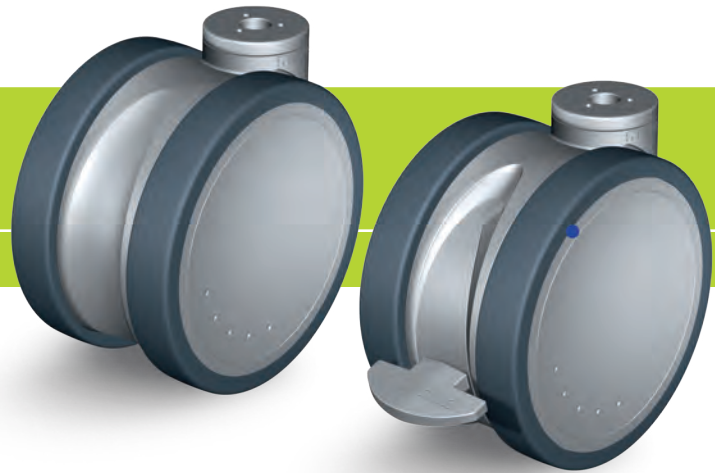
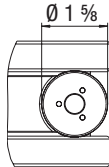
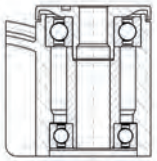


MOVE Series for 1/2" Mounting Bolt

Design Bolt Hole Synthetic Double Swivel Casters

 275 - 330 lbs

 RoHS



1

The LKDG and LKDGX rig series with bolt hole fitting in silver gray (RAL 7001) are available with the following wheel:

PATH



Tread: High-quality thermoplastic polyurethane (TPU), 94° shore A, dark gray, non-marking, non-staining, chemically bonded.
Wheel center: Impact-resistant nylon, silver gray.
Bearing type: Ball bearing.
For more information refer to page 65

 **BLICKLE**
DESIGN LINE



reddot award 2014
winner



Focus Open 2014
Special Mention

Swivel casters	Swivel casters with 'stop-fix' brake	Wheel Ø		Caster width		Load capacity		Bearing type	Total height		Plate Ø	For mounting bolt	Offset
		[inch]	[mm]	[inch]	[mm]	[lbs]	[kg]		[inch]	[mm]	[inch]	[inch]	[inch]
LKDG-PATH series													
LKDG-PATH 125K	LKDG-PATH 125K-FI	5	[125]	3 1/8	[80]	275	[125]	Ball bearing	5 1/8	[130]	1 1/8	1/2	1 9/16
LKDG-PATH 150K	LKDG-PATH 150K-FI	6	[150]	3 1/8	[80]	330	[150]	Ball bearing	6 1/8	[155]	1 1/8	1/2	2 1/16



LKDGX-PATH series - corrosion-resistant

LKDGX-PATH 125XK	LKDGX-PATH 125XK-FI	5	[125]	3 1/8	[80]	275	[125]	Ball bearing	5 1/8	[130]	1 1/8	1/2	1 9/16
LKDGX-PATH 150XK	LKDGX-PATH 150XK-FI	6	[150]	3 1/8	[80]	330	[150]	Ball bearing	6 1/8	[155]	1 1/8	1/2	2 1/16

CasterDepot

Options



	Electrically conductive version, R < 10 ⁴ Ω	With threaded bolt Ø 3/8" * or 1/2"	With stem fitting	With top plate fitting **	With central braking system 'central-stop' ***	In special color	In black color
Product code suffix	-ELS		-ZA / -ZAX	-P / -PX	-CS11		LKDB-PUA series
Available for	upon request	upon request	upon request	upon request	LKDG series upon request	upon request	Ø 2", 3", 4" upon request

* Reduced load capacity to 275 lbs for wheel-Ø 6" ** Total height +5/16"

*** Please pay attention to the metric measurement of the 11 mm switch cam