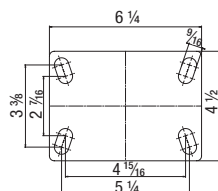
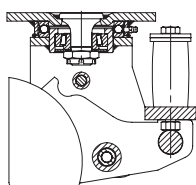


LSFE 16-Series

Heavy Duty Spring-Loaded Top Plate Casters with Polyurethane Spring

1,000 - 2,200 lbs

✓RoHS



The LSFE and BSFE rig series with top plate fitting are available with the following wheels:

SE



Tires: High-quality elastic solid rubber in smooth rolling quality 'Blickle EasyRoll', 65° shore A, black. Vulcanized tire.
Wheel center: Pressed steel, lacquered, anthracite.
Bearing type: Ball bearing.
For more information refer to page 67

GTH



Tread: High-quality polyurethane-elastomer Blickle Extrathane®, 92° shore A, light brown, non-marking, non-staining. Cast tread.
Wheel center: Rugged gray cast iron, lacquered, silver.
Bearing type: Ball bearing.
For more information refer to page 73

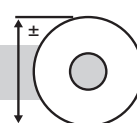
GST



Tread: High-quality polyurethane-elastomer Blickle Softthane®, 75° shore A, green, non-marking, non-staining. Cast tread.
Wheel center: Rugged gray cast iron, lacquered, silver.
Bearing type: Ball bearing.
For more information refer to page 71

Swivel casters	Rigid casters	Wheel Ø	Wheel width	Load capacity	Spring tension	Initial tension	Spring travel	Total height	Plate size	Bolt hole spacing	For mounting bolt	Offset
		[inch] [mm]	[inch] [mm]	[lbs] [kg]	[lbs] [kg]	[lbs] [kg]	[inch] [mm]	[inch] [mm]	[inch] [mm]	[inch]	[inch]	[inch]
LSFE-SE series												
LSFE-SE 160K-16	BSFE-SE 160K-16	6 5/16 [160]	2 [50]	1000 [450]	660 [300]	110 [50]	1 [25]	9 3/8 [245]	4 1/2 x 6 1/4	2 1/16 x 5 1/4 / 3 3/8 x 4 15/16	1/2	4
LSFE-SE 200K-16	BSFE-SE 200K-16	8 [200]	2 [50]	1320 [600]	1100 [500]	110 [50]	1 [25]	10 1/16 [265]	4 1/2 x 6 1/4	2 1/16 x 5 1/4 / 3 3/8 x 4 15/16	1/2	4
LSFE-GTH series												
LSFE-GTH 150K-16	BSFE-GTH 150K-16	6 [150]	2 [50]	1760 [800]	1100 [500]	110 [50]	1 [25]	9 1/2 [240]	4 1/2 x 6 1/4	2 1/16 x 5 1/4 / 3 3/8 x 4 15/16	1/2	4
LSFE-GTH 200K-16	BSFE-GTH 200K-16	8 [200]	2 [50]	2200 [1000]	1100 [500]	110 [50]	1 [25]	10 7/16 [265]	4 1/2 x 6 1/4	2 1/16 x 5 1/4 / 3 3/8 x 4 15/16	1/2	4
LSFE-GST series												
LSFE-GST 150K-16	BSFE-GST 150K-16	6 [150]	2 [50]	1320 [600]	1100 [500]	110 [50]	1 [25]	9 1/2 [240]	4 1/2 x 6 1/4	2 1/16 x 5 1/4 / 3 3/8 x 4 15/16	1/2	4
LSFE-GST 200K-16	BSFE-GST 200K-16	8 [200]	2 [50]	1760 [800]	1100 [500]	110 [50]	1 [25]	10 7/16 [265]	4 1/2 x 6 1/4	2 1/16 x 5 1/4 / 3 3/8 x 4 15/16	1/2	4

Options



	With 'Radstop' tread lock (foot-operated)	With swivel lock	With alternative spring tensions	With non-marking gray rubber tire	Antistatic version, non-marking gray	Further dimensions up to 12" and a load capacity of 5,300 lbs	European metric top plate fitting 140x110/105x75-80 mm
Product code suffix	-RA	-RI		-SG	-AS		
Available for	upon request	upon request	upon request	SE series upon request	GTH series upon request	upon request	refer to G15 catalog