

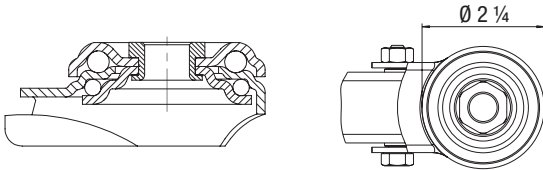
# LKRXA Series for 1/2" Mounting Bolt Medium Duty Stainless Steel Institutional Bolt Hole Swivel Casters

220 - 265 lbs

✓RoHS



2



The LKRXA rig series with bolt hole fitting is available with the following wheels:

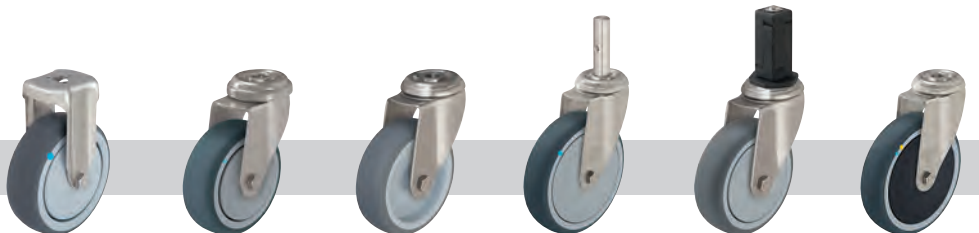
TPA		Tread: High-quality thermoplastic rubber-elastomer (TPE), containing traces of oil, 85° shore A, gray, non-marking, chemically bonded. Wheel center: Impact-resistant polypropylene, silver gray. Bearing type: <b>Plain bore</b> . For more information refer to page 64	PO		Wheel: Impact-resistant nylon, 70° shore D, natural white. Bearing type: Plain bore. For more information refer to page 76
TPA		Tread: High-quality thermoplastic rubber-elastomer (TPE), containing traces of oil, 85° shore A, gray, non-marking, chemically bonded. Wheel center: Impact-resistant polypropylene, silver gray. Bearing type: <b>Ball bearing (C)</b> with synthetic thread guard and additional ball bearing seals. For more information refer to page 64	PATH		Tread: High-quality thermoplastic polyurethane (TPU), 94° shore A, dark gray, non-marking, non-staining, chemically bonded. Wheel center: Impact-resistant nylon, silver gray. Bearing type: <b>Ball bearing (C)</b> with synthetic thread guard and additional ball bearing seals. For more information refer to page 65

Swivel casters	Swivel casters with 'stop-fix' brake *	Wheel Ø [inch] [mm]	Wheel width [inch] [mm]	Load capacity [lbs] [kg]	Bearing type	Total height [inch] [mm]	Plate Ø [inch]	For mounting bolt [inch]	Offset [inch]	G15 page
<b>LKRXA-TPA series (plain bore)</b>										
LKRXA-TPA 80G	LKRXA-TPA 80G-FI	3 1/8 [80]	1 1/4 [32]	220 [100]	Plain bore	4 1/4 [108]	2 1/4	1/2	1 9/16	344
LKRXA-TPA 101G	LKRXA-TPA 101G-FI	4 [100]	1 1/4 [32]	240 [110]	Plain bore	5 1/4 [133]	2 1/4	1/2	1 9/16	344
LKRXA-TPA 126G	LKRXA-TPA 126G-FI	5 [125]	1 1/4 [32]	265 [120]	Plain bore	6 1/4 [158]	2 1/4	1/2	1 9/16	344
<b>LKRXA-TPA series (ball bearing)</b>										
LKRXA-TPA 80KD-FK	LKRXA-TPA 80KD-FI-FK	3 1/8 [80]	1 1/4 [32]	220 [100]	Ball bearing (C)	4 1/4 [108]	2 1/4	1/2	1 9/16	344
LKRXA-TPA 101KD-FK	LKRXA-TPA 101KD-FI-FK	4 [100]	1 1/4 [32]	240 [110]	Ball bearing (C)	5 1/4 [133]	2 1/4	1/2	1 9/16	344
LKRXA-TPA 126KD-FK	LKRXA-TPA 126KD-FI-FK	5 [125]	1 1/4 [32]	265 [120]	Ball bearing (C)	6 1/4 [158]	2 1/4	1/2	1 9/16	344
<b>LKRXA-PO series</b>										
LKRXA-PO 80G	LKRXA-PO 80G-FI	3 1/8 [80]	1 1/4 [32]	265 [120]	Plain bore	4 1/4 [108]	2 1/4	1/2	1 9/16	350
LKRXA-PO 101G	LKRXA-PO 101G-FI	4 [100]	1 1/4 [32]	265 [120]	Plain bore	5 1/4 [133]	2 1/4	1/2	1 9/16	350
LKRXA-PO 126G	LKRXA-PO 126G-FI	5 [125]	1 1/4 [32]	265 [120]	Plain bore	6 1/4 [158]	2 1/4	1/2	1 9/16	350
<b>LKRXA-PATH series</b>										
LKRXA-PATH 80KD-FK	LKRXA-PATH 80KD-FI-FK	3 1/8 [80]	1 1/4 [32]	220 [100]	Ball bearing (C)	4 1/4 [108]	2 1/4	1/2	1 9/16	348
LKRXA-PATH 101KD-FK	LKRXA-PATH 101KD-FI-FK	4 [100]	1 1/4 [32]	240 [110]	Ball bearing (C)	5 1/4 [133]	2 1/4	1/2	1 9/16	348
LKRXA-PATH 126KD-FK	LKRXA-PATH 126KD-FI-FK	5 [125]	1 1/4 [32]	265 [120]	Ball bearing (C)	6 1/4 [158]	2 1/4	1/2	1 9/16	348

\* Brake lever made of nylon

More options in the Blicke general catalog G15!

Options



	Rigid casters	Wheel Ø 2" and 3" with bolt hole for bolt Ø 3/8"	With bolt hole for bolt Ø 3/8"	With stainless steel plug-in stem **	With synthetic expander fitting for 3/8" bolt hole ***	Electrically conductive version, non-marking gray ****
Product code suffix	BKRXA series	LRXA series		-ZAX51	refer to page 39	-ELS
Available for	upon request	upon request	upon request	wheel Ø 5" upon request	upon request	TPA, PATH series upon request

\*\* In acc. to DIN 18867-8 (large-scale catering equipment)

\*\*\* Swivel caster and expander are secured against loosening by a positive location fit. The maximum fitting length is 2 9/16". The total height of the caster is increased by 1/8". \*\*\*\* Load capacity is reduced by 35 %