
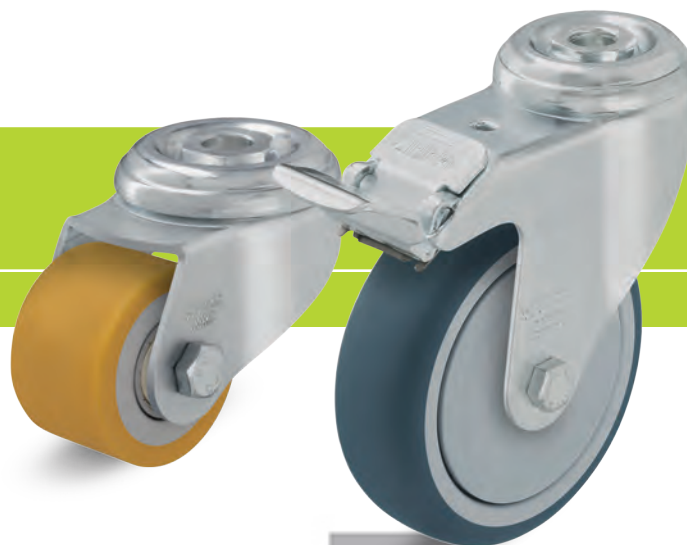
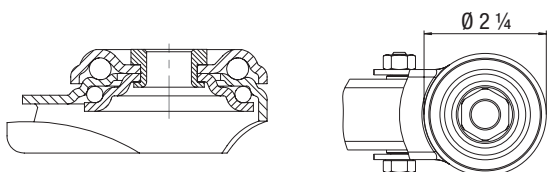


# LKRA Series for 1/2" Mounting Bolt

## Medium Duty Institutional Bolt Hole Swivel Casters


 220 - 330 lbs

 RoHS


2


The LKRA rig series with bolt hole fitting is available with the following wheels:

TPA




Tread: High-quality thermoplastic rubber-elastomer (TPE), containing traces of oil, 85° shore A, gray, non-marking, chemically bonded.  
Wheel center: Impact-resistant polypropylene, silver gray.  
Bearing types: Plain bore or ball bearing (C) with synthetic thread guard.  
For more information refer to page 64

POA




Wheel: Impact-resistant nylon, 70° shore D, black.  
Bearing type: Plain bore.  
For more information refer to page 76

PATH



Tread: High-quality thermoplastic polyurethane (TPU), 94° shore A, dark gray, non-marking, non-staining, chemically bonded.  
Wheel center: Impact-resistant nylon, silver gray.  
Bearing type: Ball bearing (C) with synthetic thread guard.  
For more information refer to page 65

VSTH



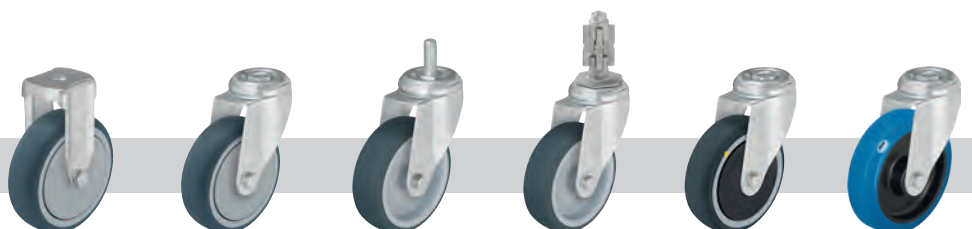
Tread: High-quality polyurethane-elastomer Bicklex Extrathane®, 92° shore A, light brown, non-marking, non-staining. Cast tread.  
Wheel center: Made of steel.  
Bearing type: Ball bearing.  
For more information refer to page 73

Swivel casters	Swivel casters with 'stop-fix' brake *	Wheel Ø [inch] [mm]	Wheel width [inch] [mm]	Load capacity [lbs] [kg]	Bearing type	Total height [inch] [mm]	Plate Ø [inch]	For mounting bolt [inch]	Offset [inch]	G15 page
<b>LKRA-TPA series</b>										
LKRA-TPA 80G	LKRA-TPA 80G-FI	3 1/8 [80]	1 1/4 [32]	220 [100]	Plain bore	4 1/4 [108]	2 1/4	1/2	1 9/16	89
LKRA-TPA 80K-FK	LKRA-TPA 80K-FI-FK	3 1/8 [80]	1 1/4 [32]	220 [100]	Ball bearing (C)	4 1/4 [108]	2 1/4	1/2	1 9/16	89
LKRA-TPA 101G	LKRA-TPA 101G-FI	4 [100]	1 1/4 [32]	240 [110]	Plain bore	5 1/4 [133]	2 1/4	1/2	1 9/16	89
LKRA-TPA 101K-FK	LKRA-TPA 101K-FI-FK	4 [100]	1 1/4 [32]	240 [110]	Ball bearing (C)	5 1/4 [133]	2 1/4	1/2	1 9/16	89
LKRA-TPA 126G	LKRA-TPA 126G-FI	5 [125]	1 1/4 [32]	265 [120]	Plain bore	6 1/4 [158]	2 1/4	1/2	1 9/16	89
LKRA-TPA 126K-FK	LKRA-TPA 126K-FI-FK	5 [125]	1 1/4 [32]	265 [120]	Ball bearing (C)	6 1/4 [158]	2 1/4	1/2	1 9/16	89
<b>LKRA-POA series</b>										
LKRA-POA 80G	LKRA-POA 80G-FI	3 1/8 [80]	1 1/4 [32]	265 [120]	Plain bore	4 1/4 [108]	2 1/4	1/2	1 9/16	105
LKRA-POA 100G	LKRA-POA 100G-FI	4 [100]	1 1/4 [32]	265 [120]	Plain bore	5 1/4 [133]	2 1/4	1/2	1 9/16	105
LKRA-POA 125G	LKRA-POA 125G-FI	5 [125]	1 1/4 [32]	265 [120]	Plain bore	6 1/4 [158]	2 1/4	1/2	1 9/16	105
<b>LKRA-PATH series</b>										
LKRA-PATH 80K-FK	LKRA-PATH 80K-FI-FK	3 1/8 [80]	1 1/4 [32]	220 [100]	Ball bearing (C)	4 1/4 [108]	2 1/4	1/2	1 9/16	100
LKRA-PATH 101K-FK	LKRA-PATH 101K-FI-FK	4 [100]	1 1/4 [32]	240 [110]	Ball bearing (C)	5 1/4 [133]	2 1/4	1/2	1 9/16	100
LKRA-PATH 126K-FK	LKRA-PATH 126K-FI-FK	5 [125]	1 1/4 [32]	265 [120]	Ball bearing (C)	6 1/4 [158]	2 1/4	1/2	1 9/16	100
<b>LKRA-VSTH series</b>										
LKRA-VSTH 50K		2 [50]	1 1/4 [33]	330 [150]	Ball bearing	2 3/4 [70]	2 1/4	1/2	1 1/8	109

\* Brake lever made of steel

More options in the Bicklex general catalog G15!

Options



	Rigid casters	With bolt hole for bolt Ø 3/8"	With threaded pin Ø 1/2"	Metal expander fitting for 3/8" bolt hole **	Electrically conductive version, non-marking gray ***	Blue rubber wheel (POEV series)
Product code suffix	BKRA series			refer to page 39	-ELS	LKRA-POEV 101K-SB-FK LKRA-POEV 126K-SB-FK
Available for	wheel Ø 3 1/8" - 5" upon request	upon request	upon request	upon request	TPA, PATH series upon request	wheel Ø 4" and 5"

\*\* Swivel caster and expander are secured against loosening by a positive location fit. The maximum fitting length is 2 9/16". The total height of the caster is increased by 1/8".

\*\*\* Load capacity is reduced by 35 % to guarantee conductivity