



LKPXA 12-Series

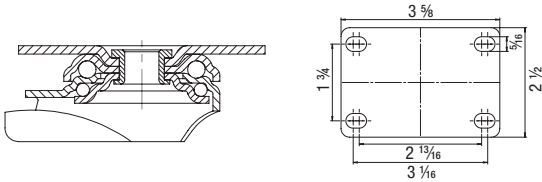
Medium Duty Stainless Steel Institutional Top Plate Swivel Casters

220 - 265 lbs

RoHS



2



The LKPXA rig series with top plate fitting is available with the following wheels:

TPA



Tread: High-quality thermoplastic rubber-elastomer (TPE), containing traces of oil, 85° shore A, gray, non-marking, chemically bonded.
Wheel center: Impact-resistant polypropylene, silver gray.
Bearing type: **Plain bore**.
For more information refer to page 64

TPA



Tread: High-quality thermoplastic rubber-elastomer (TPE), containing traces of oil, 85° shore A, gray, non-marking, chemically bonded.
Wheel center: Impact-resistant polypropylene, silver gray.
Bearing type: **Ball bearing (C)** with synthetic thread guard and additional ball bearing seals. For more information refer to page 64

PO



Wheel: Impact-resistant nylon, 70° shore D, natural white.
Bearing type: Plain bore.
For more information refer to page 76

PATH



Tread: High-quality thermoplastic polyurethane (TPU), 94° shore A, dark gray, non-marking, non-staining, chemically bonded.
Wheel center: Impact-resistant nylon, silver gray.
Bearing type: **Ball bearing (C)** with synthetic thread guard and additional ball bearing seals. For more information refer to page 65

Swivel casters	Swivel casters with 'stop-fix' brake *	Wheel Ø [inch] [mm]	Wheel width [inch] [mm]	Load capacity [lbs] [kg]	Bearing type	Total height [inch] [mm]	Plate size [inch]	Bolt hole spacing [inch]	For mounting bolt [inch]	Offset [inch]
LKPXA-TPA series (plain bore)										
LKPXA-TPA 80G-12	LKPXA-TPA 80G-12-FI	3 5/8 [80]	1 1/4 [32]	220 [100]	Plain bore	4 3/8 [111]	2 1/2 x 3 3/8	1 3/4 x 2 13/16 - 3 1/8	5/16	1 9/16
LKPXA-TPA 101G-12	LKPXA-TPA 101G-12-FI	4 [100]	1 1/4 [32]	240 [110]	Plain bore	5 3/8 [136]	2 1/2 x 3 3/8	1 3/4 x 2 13/16 - 3 1/8	5/16	1 9/16
LKPXA-TPA 126G-12	LKPXA-TPA 126G-12-FI	5 [125]	1 1/4 [32]	265 [120]	Plain bore	6 3/8 [161]	2 1/2 x 3 3/8	1 3/4 x 2 13/16 - 3 1/8	5/16	1 9/16
LKPXA-TPA series (ball bearing)										
LKPXA-TPA 80KD-12-FK	LKPXA-TPA 80KD-12-FI-FK	3 5/8 [80]	1 1/4 [32]	220 [100]	Ball bearing (C)	4 3/8 [111]	2 1/2 x 3 3/8	1 3/4 x 2 13/16 - 3 1/8	5/16	1 9/16
LKPXA-TPA 101KD-12-FK	LKPXA-TPA 101KD-12-FI-FK	4 [100]	1 1/4 [32]	240 [110]	Ball bearing (C)	5 3/8 [136]	2 1/2 x 3 3/8	1 3/4 x 2 13/16 - 3 1/8	5/16	1 9/16
LKPXA-TPA 126KD-12-FK	LKPXA-TPA 126KD-12-FI-FK	5 [125]	1 1/4 [32]	265 [120]	Ball bearing (C)	6 3/8 [161]	2 1/2 x 3 3/8	1 3/4 x 2 13/16 - 3 1/8	5/16	1 9/16
LKPXA-PO series										
LKPXA-PO 80G-12	LKPXA-PO 80G-12-FI	3 5/8 [80]	1 1/4 [32]	265 [120]	Plain bore	4 3/8 [111]	2 1/2 x 3 3/8	1 3/4 x 2 13/16 - 3 1/8	5/16	1 9/16
LKPXA-PO 101G-12	LKPXA-PO 101G-12-FI	4 [100]	1 1/4 [32]	265 [120]	Plain bore	5 3/8 [136]	2 1/2 x 3 3/8	1 3/4 x 2 13/16 - 3 1/8	5/16	1 9/16
LKPXA-PO 126G-12	LKPXA-PO 126G-12-FI	5 [125]	1 1/4 [32]	265 [120]	Plain bore	6 3/8 [161]	2 1/2 x 3 3/8	1 3/4 x 2 13/16 - 3 1/8	5/16	1 9/16
LKPXA-PATH series										
LKPXA-PATH 80KD-12-FK	LKPXA-PATH 80KD-12-FI-FK	3 5/8 [80]	1 1/4 [32]	220 [100]	Ball bearing (C)	4 3/8 [111]	2 1/2 x 3 3/8	1 3/4 x 2 13/16 - 3 1/8	5/16	1 9/16
LKPXA-PATH 101KD-12-FK	LKPXA-PATH 101KD-12-FI-FK	4 [100]	1 1/4 [32]	240 [110]	Ball bearing (C)	5 3/8 [136]	2 1/2 x 3 3/8	1 3/4 x 2 13/16 - 3 1/8	5/16	1 9/16
LKPXA-PATH 126KD-12-FK	LKPXA-PATH 126KD-12-FI-FK	5 [125]	1 1/4 [32]	265 [120]	Ball bearing (C)	6 3/8 [161]	2 1/2 x 3 3/8	1 3/4 x 2 13/16 - 3 1/8	5/16	1 9/16

* Brake lever made of nylon

Options



	Rigid casters	Electrically conductive version, non-marking gray **	Electrically conductive version, non-marking gray **	European metric top plate fitting 90x60 / 75x45/61x51 mm	European metric top plate fitting 60x60 / 38x38/48x48 mm
Product code suffix	BKPXA series	-ELS	-ELS		
Available for	upon request	TPA series upon request	PATH series upon request	wheel Ø 3 1/8" - 4" refer to G15 catalog	wheel Ø 2" and 3" refer to G15 catalog

** Load capacity is reduced by 35 % to guarantee conductivity