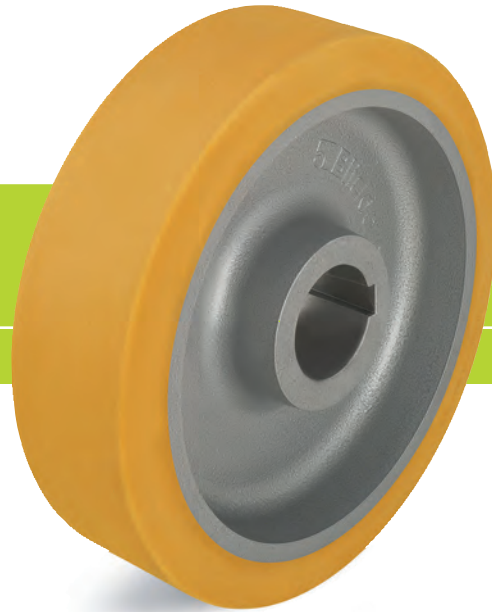


GTHN Series

Heavy Duty Drive Wheels with Hub Keyway, with Blickle Extrathane® Polyurethane Tread, with Cast Iron Wheel Center

660 - 4,850 lbs

✓RoHS



Tread & tire hardness	92° shore A
Temperature resistance	-20° F - +160° F temporarily up to +195° F
Rolling resistance	very good
Operating noise	good
Floor surface preservation	good



GTHN-wheel series:

Tread: Made of high-quality, reaction-cast polyurethane-elastomer Blickle Extrathane®, 92° shore A hardness, low-noise operation, low rolling resistance, good floor preservation, high abrasion resistance, high cut and tear propagation resistance, color light brown, non-marking, non-staining, very good chemical connection with the wheel center.

Wheel center: Made of rugged gray cast iron, plain bore keywayed in accordance to DIN 6885, lacquered, color silver.

Other features:

High chemical resistance to many aggressive substances.

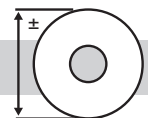
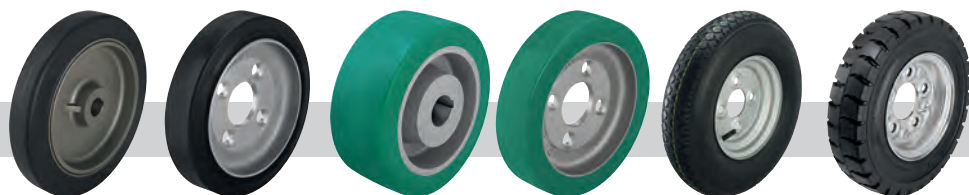
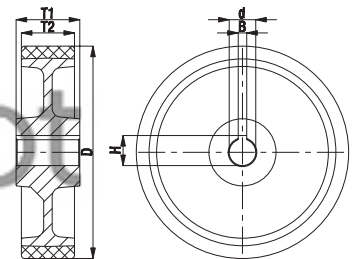
Operating temperature: -20° F to +160° F, temporarily up to +195° F.

At ambient temperatures above +105° F the load capacity is reduced.

Maintenance-free under standard conditions.

Wheels	Wheel Ø (D) [inch] [mm]	Wheel width (T2) [inch] [mm]	Load capacity [lbs] [kg]	Axle bore Ø (d) [mm]	Hub groove length (B) [mm]	Hub groove height (H) [mm]	Hub length (T1) [mm]	G15 page
GTHN 75/20H7	3 [75]	1 1/16 [40]	660 [300]	20 H7	6 JS9	22.8	40	462
GTHN 100/20H7	4 [100]	1 1/16 [40]	770 [350]	20 H7	6 JS9	22.8	40	462
GTHN 100/25H7	4 [100]	1 1/16 [40]	770 [350]	25 H7	8 JS9	28.3	40	462
GTHN 127/25H7	5 [125]	2 [50]	1210 [550]	25 H7	8 JS9	28.3	60	462
GTHN 127/30H7	5 [125]	2 [50]	1210 [550]	30 H7	8 JS9	33.3	60	462
GTHN 140/30H7	5 1/2 [140]	2 [50]	1320 [600]	30 H7	8 JS9	33.3	60	462
GTHN 150/30H7	6 [150]	2 [50]	1430 [650]	30 H7	8 JS9	33.3	60	462
GTHN 160/30H7	6 1/16 [160]	2 [50]	1540 [700]	30 H7	8 JS9	33.3	60	462
GTHN 200/25H7	8 [200]	2 [50]	1980 [900]	25 H7	8 JS9	28.3	60	462
GTHN 200/30H7	8 [200]	2 [50]	1980 [900]	30 H7	8 JS9	33.3	60	462
GTHN 202/35H7	8 [200]	3 1/8 [80]	3080 [1400]	35 H7	10 JS9	38.3	80	462
GTHN 202/40H7	8 [200]	3 1/8 [80]	3080 [1400]	40 H7	12 JS9	43.3	80	462
GTHN 251/30H7	10 [250]	2 [50]	2420 [1100]	30 H7	8 JS9	33.3	60	463
GTHN 251/40H7	10 [250]	2 [50]	2420 [1100]	40 H7	12 JS9	43.3	60	463
GTHN 252/40H7	10 [250]	3 1/8 [80]	3520 [1600]	40 H7	12 JS9	43.3	80	463
GTHN 252/50H7	10 [250]	3 1/8 [80]	3520 [1600]	50 H7	14 JS9	53.8	80	463
GTHN 253/50H7	10 [250]	4 [100]	4850 [2200]	50 H7	14 JS9	53.8	100	463

CasterDepot



	Wheel with hub keyway and elastic solid rubber tire	Hub fitting wheel with elastic solid rubber tire	Wheel with hub keyway and softer tread, 75° shore A	Hub fitting wheel with softer tread, 75° Shore A	Hub fitting wheel with pneumatic tire	Hub fitting wheel with super-elastic solid rubber tire	Further dimensions and US-Standard bore and keyway dimensions *
Product code suffix	GEVN series	GEVA series	GSTN series	GSTA series	PA series	VLEA series	
Available for	upon request	upon request	upon request	upon request	upon request	upon request	upon request

* Up to a diameter of 40" and a load capacity of 55,000 lbs