

## GSPO Series

Extra Heavy Duty Wheels made of Cast Nylon

1,430 - 6,600 lbs

✓RoHS

<b>Tread &amp; tire hardness</b>	80° shore D
<b>Temperature resistance</b>	-15° F - +175° F
<b>Rolling resistance</b>	excellent
<b>Operating noise</b>	reasonable
<b>Floor surface preservation</b>	reasonable

### GSPO-wheel series:

Made of high-quality, impact-resistant, hard and tough, highly compressed cast nylon with extremely high load capacity, 80° shore D hardness, very low rolling and swivel resistance, smooth running performance on even floors, high abrasion resistance, color natural beige.

### Bearing type:

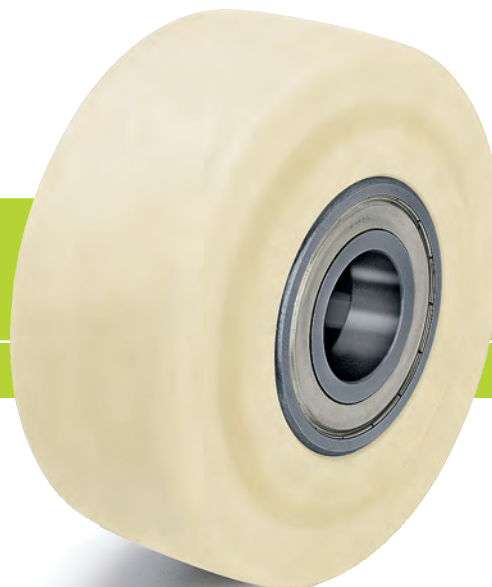
- Ball bearing: Two pressed-in ball bearings, lubricated with long-life grease.

### Other features:

High chemical resistance to many aggressive substances (for more information please refer to page 36-37 of the Bickler general catalog G15). Operating temperature: -15° F to +175° F. At ambient temperatures above +95° F the load capacity is reduced.

The relatively high floor pressure should be considered for pressure-sensitive floors. For more information please refer to page 24 of this catalog.

Maintenance-free under standard conditions.



Wheels	Wheel Ø (D) [inch] [mm]	Wheel width (T2) [inch] [mm]	Load capacity [lbs] [kg]	Bearing type	Axle bore Ø (d) [mm]	Hub length (T1) [inch] [mm]	G15 page
GSPO 65/15K	2 1/2 [65]	1 1/8 [40]	1430 * [650]	Ball bearing	15	1 3/4 [45]	314
GSPO 80/20K	3 1/8 [80]	1 1/8 [40]	2200 * [1000]	Ball bearing	20	1 3/4 [45]	314
GSPO 100/20K	4 [100]	1 1/8 [40]	2750 * [1250]	Ball bearing	20	1 3/4 [45]	314
GSPO 101/25K	4 [100]	2 1/2 [55]	3300 * [1500]	Ball bearing	25	2 1/2 [60]	314
GSPO 125/25K	5 [125]	2 1/2 [55]	4400 * [2000]	Ball bearing	25	2 1/2 [60]	314
GSPO 150/30K	6 [150]	2 1/2 [55]	5500 [2500]	Ball bearing	30	2 1/2 [60]	314
GSPO 152/35K	6 [150]	3 1/8 [80]	6600 [3000]	Ball bearing	35	3 1/2 [90]	314
GSPO 200/35K	8 [200]	2 1/2 [55]	6600 [3000]	Ball bearing	35	2 1/2 [60]	314

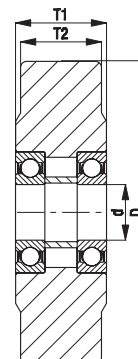
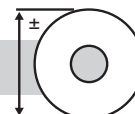
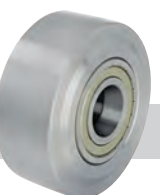
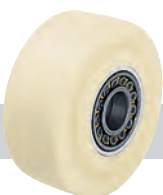
\* Test in accordance to DIN 12532 with extended resting periods in order to avoid thermal overstressing



**BUSHING**  
REFER TO PAGE 20

More options in the Bickler general catalog G15!

Options



	Plain bore version	With spherical roller bearing	Heavy duty cast iron wheels	Heavy duty solid steel wheels	With stainless steel ball bearing	Further dimensions **
<b>Product code suffix</b>		-PR	G series	SVS series	-XK	
Available for	upon request	upon request	Ø 3 1/8" - 10" upon request	Ø 2 17/32" - 12" upon request	upon request	upon request

\*\* Up to a diameter of 40" and a load capacity of 110,000 lbs