

## DSPK, DSPKGSP0 Series

Solid Steel V-Grooved Wheels /  
Cast Nylon V-Grooved Wheels

265 - 2,640 lbs

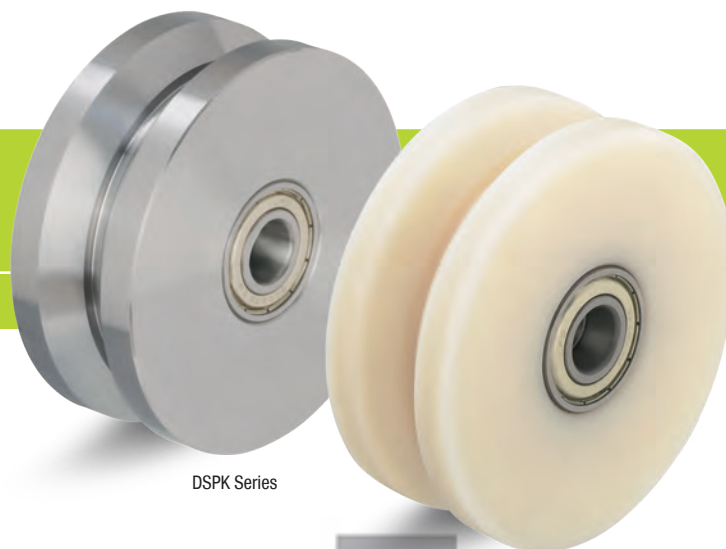
✓RoHS

### DSPK series:

Tread & tire hardness	190 - 230 HB
Temperature resistance	-15° F - +250° F
Rolling resistance	excellent
Operating noise	sufficient
Floor surface preservation	sufficient

### DSPKGSP0 series:

Tread & tire hardness	80° shore D
Temperature resistance	-15° F - +175° F
Rolling resistance	excellent
Operating noise	reasonable
Floor surface preservation	reasonable



DSPK Series

DSPKGSP0 Series

### DSPK-wheel series:

Made of mild steel, with lightly oiled surface, V-shaped tread (for angular steel), exceptionally low rolling resistance, outstanding wear resistance, extremely high static and dynamic load capacity.

### DSPKGSP0-wheel series:

Made of high-quality, impact-resistant, hard and tough, highly compressed cast nylon, 80° shore D hardness, V-shaped tread (for angular steel), very low rolling resistance, high abrasion resistance, color natural beige.

### Bearing type:

- Ball bearing: Two pressed-in ball bearings, lubricated with long-life grease.

### Other features DSPK series:

Operating temperature: -15° F to +250° F.

### Other features DSPKGSP0 series:

High chemical resistance to many aggressive substances.

Operating temperature: -15° F to +175° F.

At ambient temperatures above +95° F the load capacity is reduced.

### More information:

The relatively high floor pressure should be considered for pressure-sensitive floors. For more information please refer to page 24 of this catalog.

Maintenance-free under standard conditions.

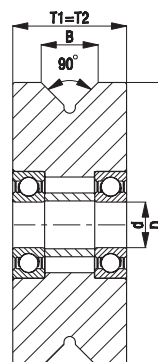
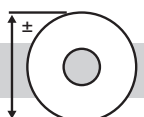
### Double flanged wheels

Double flanged wheels	Wheel Ø		Wheel width (T2)		Recess width (B)		Load capacity		Bearing type	Axle bore Ø (d) [mm]	Hub length (T1)		G15 page	
	(D)													
	[inch]	[mm]	[inch]	[mm]	[inch]	[mm]	[lbs]	[kg]			[inch]	[mm]		
DSPK series														
DSPK 50K	2	[50]	1 <sup>1</sup> / <sub>16</sub>	[18]	1 <sup>5</sup> / <sub>32</sub>	[12]	265	[120]	Ball bearing	10	1 <sup>1</sup> / <sub>16</sub>	[18]	341	
DSPK 75K	3	[75]	2 <sup>7</sup> / <sub>32</sub>	[22]	¾	[16]	550	[250]	Ball bearing	12	2 <sup>7</sup> / <sub>32</sub>	[22]	341	
DSPK 100K	4	[100]	1 <sup>5</sup> / <sub>16</sub>	[24]	1 <sup>1</sup> / <sub>16</sub>	[18]	660	[300]	Ball bearing	15	1 <sup>5</sup> / <sub>16</sub>	[24]	341	
DSPK 101K *	4	[100]	1 ¾	[40]	2 <sup>5</sup> / <sub>32</sub>	[20]	1320	[600]	Ball bearing	15	1 ¾	[40]	341	
DSPK 120K	4 ¾	[120]	1 ¾	[35]	1	[25]	1320	[600]	Ball bearing	20	1 ¾	[33]	341	
DSPK 125K *	5	[125]	2	[50]	1	[25]	2640	[1000]	Ball bearing	20	1 ¾	[50]	341	
DSPK 150K	6	[150]	1 ¾	[33]	1	[25]	1760	[800]	Ball bearing	20	1 ¾	[33]	341	
DSPK 200K	8	[200]	1 ¾	[33]	1	[25]	2200	[1000]	Ball bearing	20	1 ¾	[33]	341	
DSPKGSP0 series														
DSPKGSP0 100K	4	[100]	1 <sup>5</sup> / <sub>16</sub>	[24]	1 <sup>1</sup> / <sub>16</sub>	[18]	330	[150]	Ball bearing	15	1 <sup>5</sup> / <sub>16</sub>	[24]	340	
DSPKGSP0 101K *	4	[100]	1 ¾	[40]	2 <sup>5</sup> / <sub>32</sub>	[20]	880	[400]	Ball bearing	15	1 ¾	[40]	340	
DSPKGSP0 125K *	5	[125]	2	[50]	1	[25]	1540	[700]	Ball bearing	20	1 ¾	[50]	340	

\* Wheels with wide tread which can also run on the floor

More  
options in the  
Blickle general  
catalog  
G15!

### Options



	With rigid rig	Further versions	With stainless ball bearing	Further dimensions
Product code suffix			-XK	
Available for	upon request	upon request	DSPKGSP0 series upon request	upon request